

Single Use Flexible Ureteroscope

Precise Targeting • No Cross-Contamination Risk



270° Up /270° Down



Encrypted Connector



Rotatable



160,000 Pixels



Ergonomic Handle



PT. Wickland Medika Imantara
Medical, Aesthetics & Laboratory Supplier

Jl. Palem Sememi Raya No 12 – 12A Kel. Sememi,
Kec. Benowo Surabaya 60198 | 031-33100412



3.0 mm



2.5 mm

Head Size



With Button

Type A



Without Button

Type B

Compatible Accessories



Urinary Guidewire



Urinary Stone Retrieval Basket



Access Sheath



Negative Pressure Access Sheath

*More urology products are available on MEDNOVA urology catalog

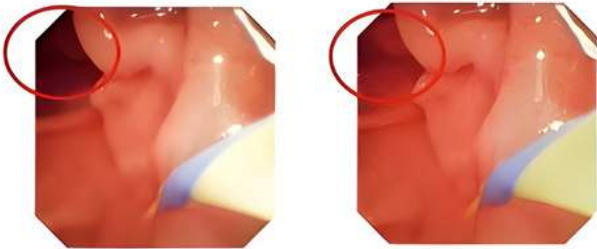
SINGLE USE URETEROSCOPE PARAMETERS

Model	MD-A-UE30	MD-A-UE25
O.D. of Tip	3.0mm (9.0 Fr)	2.5mm (7.5 Fr)
Bending Angle	U270° /D270°	U270° /D270°
Articulation Section O.D.	3.2mm (9.6 Fr)	2.7 mm (8.1 Fr)
Length	670mm	670mm
Working Channel	1.2mm (3.6 Fr)	1.05mm (3.15 Fr)
Depth of Field	3mm - 50mm	3mm - 50mm
Field of View	120°	120°
Light Source	LED	LED
Pixels Output	160000	160,000
Single Use	Yes	Yes

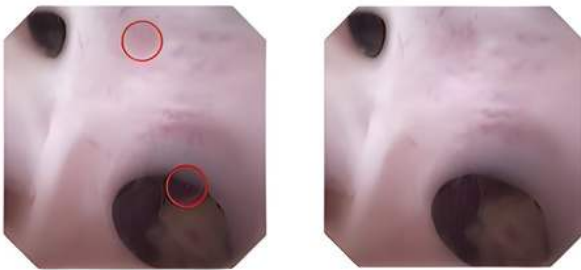
IMAGE PROCESSING SYSTEM

One-Click Calibration • Clear Visualization • User-Friendly

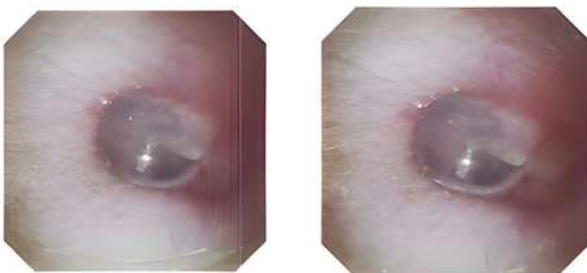
Auto-Exposure Compensation for Dark Areas



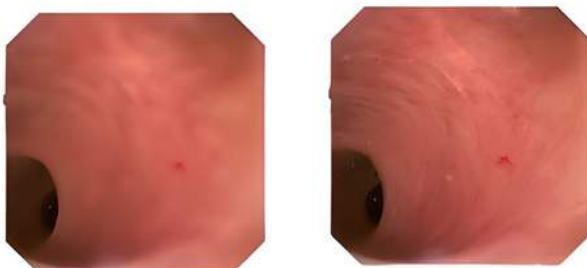
Automatic Bad Pixel Correction



Intelligent Vertical Stripe Elimination



Intelligent Image Quality Enhancement



PARAMETERS



MODEL	MD-A-IP3010	
Size	300mm×350mm×100mm	
Weight	5.1kg	
Signal Output	CVBS	Support
	HDMI 1.4	Support
	3G-SDI	Support
	DVI	Support
Resolution Output	1980X1080	
Frames/Sec Output	50-60HZ	
Signal Input	Type-C (Encrypted)	
Storage	USB 2.0 Storage Input	
Languages Support	English, Chinese etc.	



Built-in Intelligent Chip Can Automatically Achieve Image Quality Enhancement.



Encrypted Interface: Compatible with MEDNOVA's Various Electronic Endoscopes for Multiple De-



One-Touch White Balance to Prevent the Occurrence of Color Deviation.



Multiple Optional Output Interfaces, Including 3G-SDI for Ultra-Long-Range Signal Transmission

MODEL	MD-A-PP285247
Size	285mmX50mmX247mm
Screen Size	12.1 inches
Weight	2.5kg
Signal Output	HDMI 1.4
Resolution Output	1980X1080
Frames/Sec Output	50-60HZ
Signal Input	Type-C (Encrypted)
Storage	USB 2.0 Storage Input
Languages Support	English, Chinese etc.
Electronic Amplification	X1.0 - X2.0



Optional Built-in Battery Configuration, with Battery Life Exceeding 4+ Hours.



Brand-Customized UI Interface (MOQ Required)



Lightweight and Portable: Equipped with a Carrying Handle, with a Device Weight of Only 2.5kg



Built-in Patient Recording System and Equipment Usage Count Recording.