

# EQUIPMENT PARAMETERS

Capacity Of Disinfectant	10-12 L
Capacity of Enzyme	50mL each cycle, ratio adjustable
Capacity of Alcohol	50mL each cycle
Disinfectant Dosage	10-12 L solution
Endoscope disinfectant compatible	most common disinfectants , including glutaraldehyde, OPA, PAA, and Peracetic Acid
Leakage Detection	Leak-Testing throughout the whole process and alarm when leakage occurs
Disinfection Record	The microcomputer automatically records every solution process and shows the counts on the screen and printer paper
Rinsing time	Adjustable
Detergent Time	Detergent step can be skipped
Disinfection Time	It can be set as required.
Alarm And Thermostat	Alarming when lack of disinfectant or out of order, display the fault; pausing when under the demand temperature
Add/drain Disinfectant	Automatic
Noise	<= 60db
Heating function	Adjustable from 0 to 40 degrees Celsius
Water filtration function	0.01µm PVC ultrafiltration membrane
Air Filtration Function	0.2µm
Electric Switch for Lid	Press the button on screen or with a foot switch
Disinfection Efficacy	The log inactivation value of Bacillus atrophaeus ≥3.00
Self-Solution Cycle	Self-disinfectant all pipes to avoid re-infection
Print Function	Automatic printing of disinfection information
Size	960mm*552mm*620mm
Height of Wheel	75mm Power Supply
Power Supply	0.5KVA, AC220V±10%, 50-60Hz, max:350W
Water supply and Draining	Water pressure: 0.3 - 0.4 MPa
Ambient Temperature	5℃ ~ 40℃
Weight	60kg
Standard Configuration	1 main machine, 1 power cord, 3 leakage tester adaptor, 1 operation manual



## FULLY AUTOMATIC ENDOSCOPE WASHER

EW-MC200  
Endoscope Friendly, Efficient, Safe



### Cleaning Tank

Innovative cleaning tank design minimizes shaking, reduces collision risk, and ensures endoscope safety during cleaning.



### Inner Sensors



Endoscope washer features multiple sensors for real-time monitoring, ensuring optimal cleaning conditions and instant alerts for issues.

### Endoscope Washer Cleaning Procedure

- 01 Lid Opening with button press or foot switch
- 02 Putting the endoscope in and close lid with button press or foot switch
- 03 Full - process leak monitoring with air leakage alarm
- 04 Water Feeding, Rinsing, and Draining
- 05 Detergent Mixing, Feeding, Rinsing, and Draining
- 06 Water Feeding, Rinsing, and Draining
- 07 Disinfectant feeding, Rinsing, Soaking and Draining
- 08 Water Feeding, Rinsing, and Draining
- 09 Report Generation and printing
- 10 Open lid and take out Endoscope



### Cost Efficiency and Environmental Sustainability



Each cleaning step consumes 10-12 liters of liquid (water, enzyme mixture solution, or disinfectants accordingly).

### The 7-Inch TFT-LCD Touch Screen

7-inch touchscreen enables cleaning settings, step tracking, and countdown display for user-friendly operation.



### Visualization Of Cleaning Process



Transparent lid enables process monitoring, verifies connections, and ensures complete disinfection of endoscope and lid.

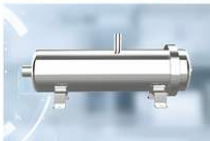


### Printer Function

Supports printing, data management, and traceability with detailed cleaning process documentation for comprehensive records.



### Inner Filter



0.01micron filter ensures impurity-free water, preventing endoscope channel blockages during cleaning.



### External Water Filter ( Filtration accuracy: 1μm )



### Air Flush Gun



### Booster Pump



Voltage: 220V  
Power: 150W  
Interface: DN20(25mm)

### Endoscope Dryer



Power: 1100W  
Rotation Speed: 2800 r/min

### Endoscope Disinfectant



	Glutaraldehyde Disinfectant	Peracetic Acid Disinfectant	Ortho-phthalaldehyde
Product Specifications	500ml/bottle, 2.5L/barrel	Agent A: 4.96L/barrel, Agent B: 62ml/bottle	2.5L/barrel, 5L/barrel
Notes	OEM Available	OEM Available	OEM Available

### Disinfectant Test Strips



Test strips for glutaraldehyde, Ortho-phthalaldehyde, and peracetic acid. These three products can be customized in quantities of either 50 pieces or 100 pieces.

### Endoscope Cabinet

Flexible endoscope storage cabinets: 4-6 endoscopes single door, 6-10 endoscopes double door, Ultraviolet Circulation air, Microcomputer LED



### Endoscope Transfer Trolley



Name	Model	Specifications	Parameters
Movable Endoscopic Transfer Trolley	Double-layer	102×59×74 cm	Tray: Carbon fiber composite material (same as cleaning tank), one-time stamped formation.
	Triple-layer		