



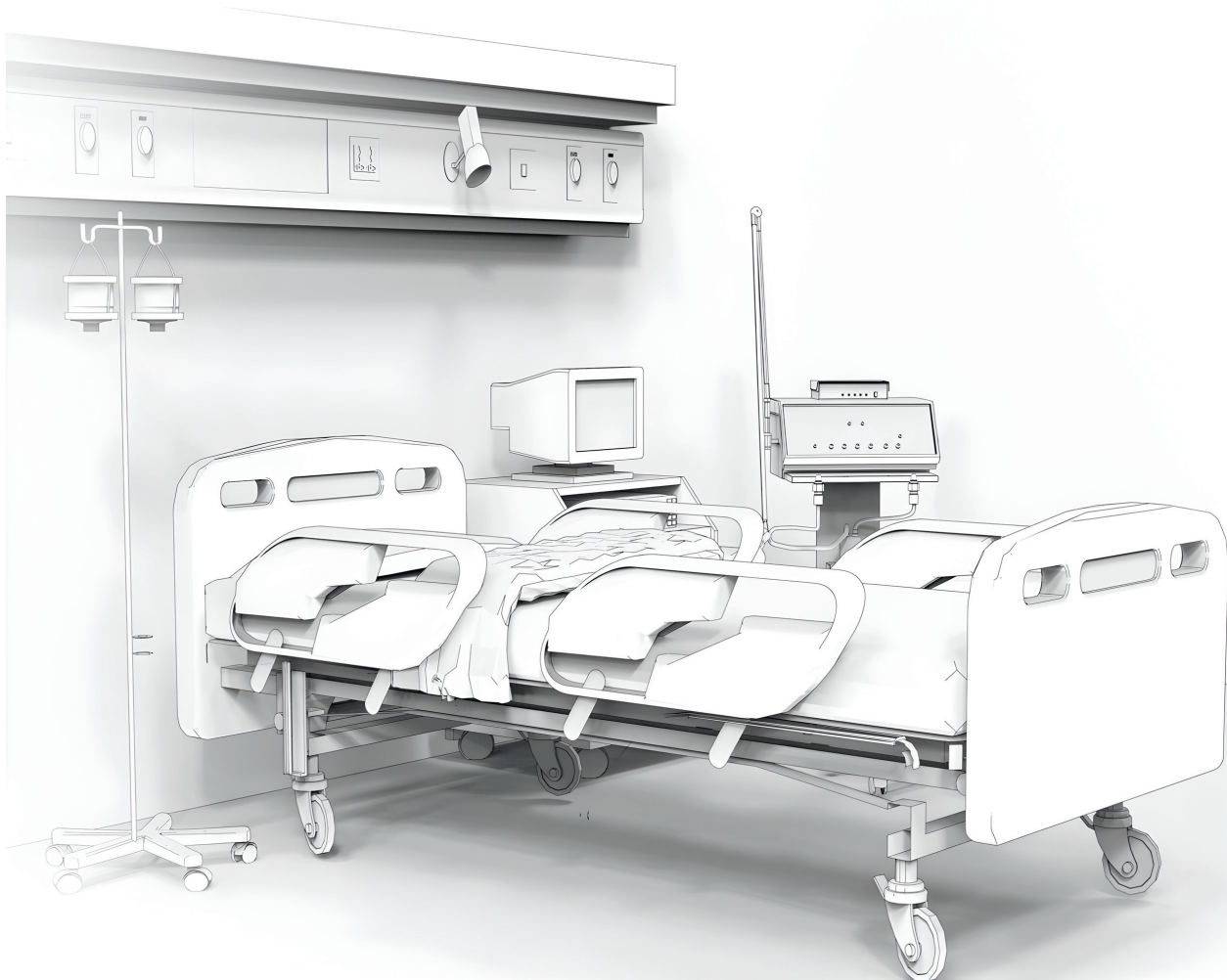
WICKLAND MEDIKA IMANTARA

MEDICAL EQUIPMENT , AESTHETICS AND LABORATORY SUPPLIER



PT. Wickland Medika Imantara
Medical, Aesthetics & Laboratory Supplier

Jl. Palem Sememi Raya No 12 - 12A Kel. Sememi,
Kec. Benowo Surabaya 60198 | 031-33100412





● KL- LED · STR78/STR78

KL-LED·STR78 series LED shadowless operating lamp

KL-LED·STR78 series LED shadowless operating lamp is suitable for various operation needs. It is a modern ideal surgical lighting equipment operating room and purify the operating room.



● KL- LED · STR78



▲ Intelligent LCD touch control

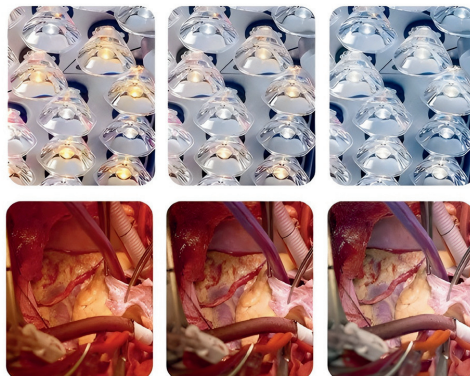


▼ Independent depth lighting

KL-LED·STR78 series

- Adopt imported LED cold light source
- Independent deep cavity lighting, improving lighting depth
- Intelligent LCD touch control
- Adjustable color temperature, with R9(red) and R11(green) auxiliary lighting function
- Integral aluminum alloy shell, high strength and fast heat dissipation
- Independent control of minimally invasive lighting, deep cavity lighting and ambient light
- Removable handle cover, convenient for cleaning and disinfection
- Illumination shadow automatic compensation function
- Titanium alloy balance arm, without welding, ensures that each angle is 90° without drift
- Ultra thin and highly transparent optical lens, reducing power consumption and improving shadowless effect
- The spring arm adopts imported spring, which can be lifted up and down easily and flexibly
- Low energy consumption and high energy efficiency

KL-LED.STR78 series LED shadowless operating lamp



Adjustable color temperature ▲

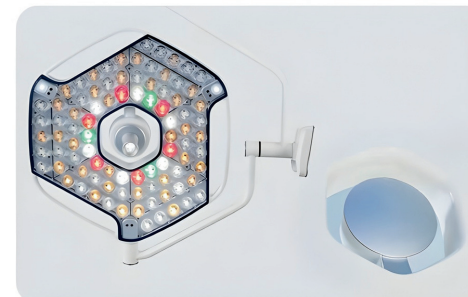
You can choose the most appropriate OR light depending on your preference or the type of tissue. This feature helps you better distinguish between different types of organizations. The switching of different colors can help users concentrate and reduce errors caused by fatigue.

Independent depth lighting ◀

It is the first to create suspension mirror and independent deep cavity function, which makes the shadowless rate and illumination depth reach an ideal effect. It meets any deep cavity surgery. At the same time, it can eliminate the harm of glare to medical personnel.

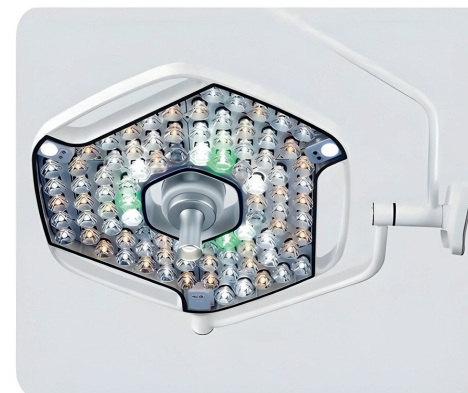
High Color Rendering Index

High color rendering index, which correctly represents the original color of the substance.



Excellent laminar flow cleaning adaptability ▲

The hollow lamp body design, the hollow handle outside, and the smooth and clean surface bring excellent laminar flow cleaning adaptability.



R9 Index ▲

R9 function is specifically for red color rendering index, especially for deep, infiltrated red, the effect is more obvious. The independently controllable R9 function helps users accurately see the subtle differences and details in the red tissue, making the eyes more relaxed, which is very important for the presentation of muscle tissue.

Green Light Mode ◀

The green light mode is used in cardiac surgery, neurosurgery, etc., which require a high color rendering index.

Minimally invasive lighting ▼

The independently controlled minimally invasive lighting is applicable to all kinds of minimally invasive surgery.

Illumination automatic compensation ▼

Entering the sensor port, When the doctor's head cover the light source, other untouched places will automatically compensate for the light, thus ensuring the ideal illumination brightness of the operator part.





KL-LED•DTR78 series

Features:

- Adopt imported LED cold light source
- Nano coating of heat sink has created an excellent heat dissipation effect.
- Intelligent touch screen
- Removable handle cover, facilitate cleaning and sanitation
- Titanium alloy balance arm, no welding, never rust
- Imported spring arm, lift up and down, light and flexible
- Adjustable color temperature, with R9(red) and R11(green) auxiliary lighting function
- With endoscopy surgery auxiliary lighting function
- Light focus size adjusted electrically
- Illumination automatic compensation function



● KL- LED•DTR78/DTR78



KL-LED•DTR78 series SHADOWLESS OPERATING LAMP

KL-LED.DTR78 series LED shadowless operating lamp is suitable for various operation needs. It is a modern ideal surgical lighting equipment operating room and purify the operating room.



● KL- LED•DTR78



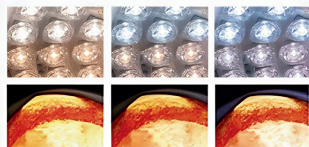
Focus size adjusted electrically



Control panel



KL-LED•DTR78 series SHADOWLESS OPERATING LAMP



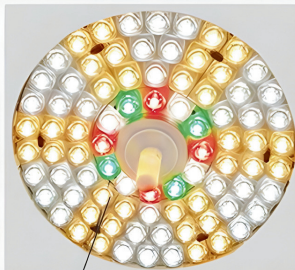
Adjustable color temperature

You can choose the most appropriate OR light depending on your preference or the type of tissue. This feature helps you better distinguish between different types of organizations.



Illumination automatic compensation

Entering the sensor port, When the doctor's head cover the light source, other untouched places will automatically compensate for the light, thus ensuring the ideal illumination brightness of the operator part.



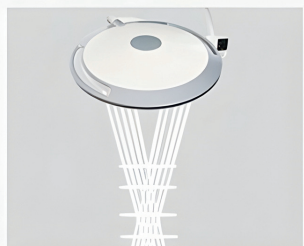
Green Light Mode

The green light mode is used in cardiac surgery, neurosurgery, etc., which require a high color rendering index.



R9 Index

We have especially R9 function, specifically for red color rendering index, especially for deep, infiltrated red, the effect is more obvious. With R9, you can accurately see the subtle differences and details in the red tissue, making your eyes more relaxed and important for the presentation of muscle tissue.



High Color Rendering Index

Ra=97, High color rendering index, which correctly represents the original color of the substance.
R13=99,
R15=98,

Depth Lighting

Special suspension lens provide great shadowless effect and depth lighting effect. Also with anti-glare function.



KL-LED•D78 series

Features:

- Adopt imported LED cold light source
- Nano coating of heat sink has created an excellent heat dissipation effect.
- Intelligent touch screen, with adjustable color temperature
- Titanium alloy balance arm, no welding, never rust
- Imported spring arm, lift up and down, light and flexible
- Minimally invasive lighting and R9 function, endoscopy function

KL-LED•D78 series SHADOWLESS OPERATING LAMP



● KL- LED•D78/D78

KL-LED•D78 series SHADOWLESS OPERATING LAMP

KL-LED.D78 series LED shadowless operating lamp is suitable for various operation needs. It is a modern ideal surgical lighting equipment operating room and purify the operating room.



● KL- LED•D78



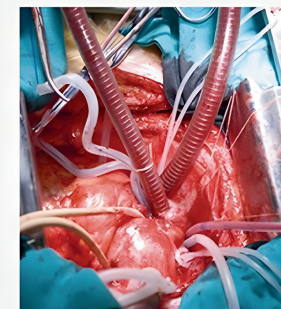
Endoscopy Surgery Lighting Mode

Independent control of minimally invasive lighting is suitable for all types of minimally invasive surgery.



Depth Lighting

Special suspension lens provide great shadowless effect and depth lighting effect. Also with anti- glare function.



High Color Rendering Index

High color rendering index, which correctly represents the original color of the substance.



Adjustable color temperature

You can choose the most appropriate OR light depending on your preference or the type of tissue, texture of the wound mechanism, etc. This feature not only helps you better distinguish between different types of organizations, but also allows you to more accurately perceive the truest colors of your organization.





● KL- LED · DT61/DT61



KL-LED-DT61 OPERATING LAMP

KL-LED-DT61 series surgical shadowless lamps are suitable for the needs of various surgical occasions, and they are ideal surgical lighting equipment for modern operating rooms and clean operating rooms.



● KL- LED · DT61

Humanized control experience

- Simple control method, efficient customization of required functions

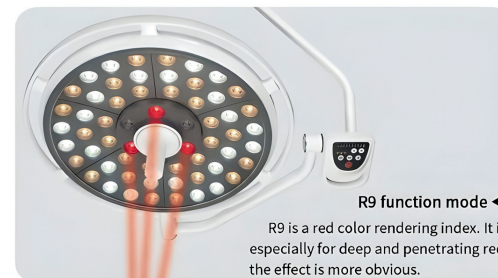


- Switch
- Infinite brightness control
- Multi-level adjustable color temperature
- R9 mode
- Minimally invasive mode

- It adopts imported LED cold light source and ultra-thin optical lens
- Adjust the brightness of the LED infinitely in digital
- Having a function of adjusting the spot diameter
- Removable handle cover for easy cleaning and disinfection
- Independent minimally invasive lighting
- With R9 function and color temperature adjustment function
- The spring arm is imported spring, titanium alloy big arm, no welding, to ensure that there is no drift at each angle of 90°



KL-LED-DT61 OPERATING LAMP



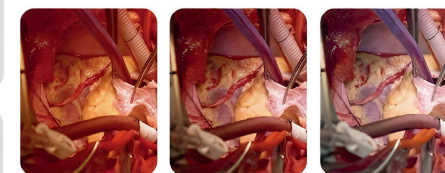
R9 function mode ◀

R9 is a red color rendering index. It is especially for deep and penetrating red, the effect is more obvious.



Minimally invasive lighting ◀

Independently controlled minimally invasive lighting is suitable for all kinds of minimally invasive surgery.



Humanized multi-level color temperature adjustable ▲

You can choose the most suitable light tone according to your own preferences, tissue type, wound texture, etc. This function not only helps you distinguish different types of tissues more clearly, but also allows you to more accurately perceive the truest colors of the tissues. At the same time, the switching of different tones can also help you concentrate and reduce errors caused by fatigue.

Depth lighting ▼

Condenser beam can meet various deep cavity surgical lighting.



Excellent shadowless effect ▼



KL-LED•STZ5 series SHADOWLESS OPERATING LAMP



● KL- LED•STZ5/STZ5

KL-LED•STZ5 series SHADOWLESS OPERATING LAMP

KL- LED.STZ5 series LED shadowless operating lamp is suitable for various operation needs. It is a modern ideal surgical lighting equipment operating room and purify the operating room.



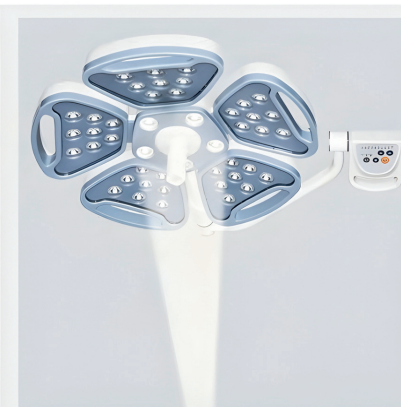
● KL- LED•STZ5

Features ●

- Adopt imported LED cold light source, white the ultra-thin optical lens
- Adopt digital means for stepless regulation of LED brightness.
- Adjust the diameter of light spot and color temperature
- Removable handle sheath, easy to clean and disinfect
- Flower-shaped super thin design light head
- With Endoscopy model
- Titanium alloy balance arm, no welding, never rust
- Nano coating of heat sink has created an excellent heat dissipation effect.



KL-LED•STZ5 series SHADOWLESS OPERATING LAMP



Adjustable color temperature

You can choose the most appropriate OR light depending on your preference or the type of tissue, texture of the wound mechanism, etc. This feature not only helps you better distinguish between different types of organizations, but also allows you to more accurately perceive the truest colors of your organization.

Endoscopy model



Depth Lighting

Special suspension lens provide great shadowless effect and depth lighting effect. Also with anti- glare function.



Control panel

Smile design, giving a sense of closeness, achieving illumination and color temperature adjustment



Excellent shadowless effect

The light beam emitted by the evenly arranged LED bulbs is pure white and natural. Even though there are obstructions, it can still project a bright and continuous spot in the operation area.



● KL- LED•SZ4/SZ4

KL-LED•SZ4 series SHADOWLESS OPERATING LAMP

KL- LED.SZ4 series LED shadowless operating lamp is suitable for various operation needs. It is a modern ideal surgical lighting equipment operating room and purify the operating room.

Features ●

- Adopt imported LED cold light source, white the ultra-thin optical lens
- Adopt digital means for stepless regulation of LED brightness.
- Adjust the diameter of light spot
- Removable handle sheath, easy to clean and disinfect
- Flower-shaped super thin design light head
- Titanium alloy balance arm, no welding, never rust
- Imported balance arm, lift up and down, light and flexible



● KL- LED•SZ4

KL-LED•SZ4 series SHADOWLESS OPERATING LAMP



KEEP YOU COOL AND WOUND CARE

LED cold light source without infrared radiation, coupled with our nano-coated heat sink, creates an ideal cooling effect. It avoids the problem of heating the area around the surgeon's head, and prevents desiccation of exposed tissue, and is good for the quickly recover of the wound.



Unique Design





Technica Specifications

| Mode | KL-LED.DTR78/DTR78 | KL-LED.D78/D78 | KL-LED.DT61/DT61 |
|---|---------------------------------------|---------------------------------|---------------------------------|
| Illumination at 1m(lux) | 40000~160000 /40000~160000 | 40000 / 160000 /40000~160000 | 40000 / 160000 /40000~160000 |
| Illumination at 1m on Endo mode(lux) | 10000 | 10000 | 10000 |
| Light filed diameter D10mm | 180±40 / 180±40 electrically adjusted | 180±40 / 180±40 | 180±40 / 180±40 |
| D50(mm) | 110±35 / 110±35 electrically adjusted | 110±35 / 110±35 | 110±35 / 110±35 |
| Depth of L1+L2 illumination(cm) | 150 | 150 | 150 |
| Color rendering index(Ra) | 100≥Ra≥85 | 100≥Ra≥85 | 100≥Ra≥85 |
| Red color rending index R9 | ≥97 | ≥97 | ≥97 |
| Optional color temperature(K) | 6700≥Tc≥3000K | 6700≥Tc≥3000K | 6700≥Tc≥3000K |
| Number of LEDs | 84 / 84 | 84 / 84 | 60 / 60 |
| Average bulb life (hours) | 50,000 | 50,000 | 50,000 |
| Heat-to-light ratio(mW/m ² lx) | <6 | <6 | <6 |
| Power supply | 110-240 V | 110-240 V | 110-240 V |
| Input power(VA) | 150W / 150W | 150W / 150W | 120W / 120W |
| Ceiling height for installation(cm) | 270-320 | 270-320 | 270-320 |
| Green color rending index R11 | ≥97 | | |

| Mode | KL-LED.STZ5/STZ5 | KL-LED.SZ4/SZ4 |
|---|-------------------------------|--------------------------------|
| Illumination at 1m(lux) | 40000~160000 /40000~160000 | 40000~120000 / 40000~120000 |
| Illumination at 1m on Endo mode(lux) | 10000 | |
| Light field diameter at 1m (cm) | 10-28 | 10-28 |
| Light filed diameter D10mm | 180±40 / 180±40 | 180±40 / 180±40 |
| D50(mm) | 110±35 / 110±35 | 110±35 / 110±35 |
| Depth of L1+L2 illumination(cm) | 150 | 150 |
| Color rendering index(Ra) | 100≥Ra≥85 | 100≥Ra≥85 |
| Optional color temperature(K) | 5000≥Tc≥3000K | 4500±500K |
| Number of LED bulbs | 45/ 45 | 32/32 |
| Average bulb life (hours) | 50,000 | 50,000 |
| Heat-to-light ratio(mW/m ² lx) | <6 | <6 |
| Working distance(cm) | 70-140 | 70-140 |
| Power supply | 100-240 V, 50/60HZ | 100-240 V, 50/60HZ |
| Max. power consumption(VA) | 90W / 90W | 80W / 80W |
| Ceiling height for installation(cm) | 270-320 | 270-320 |



Operation lamp with digital HD camera system



● KL-LED•DTR78/DTR78 with camera system

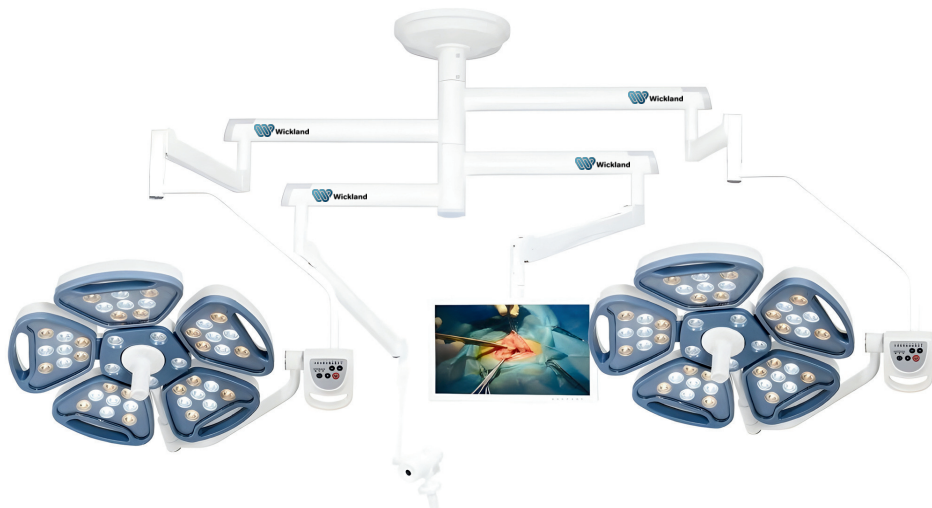


Panorama carema



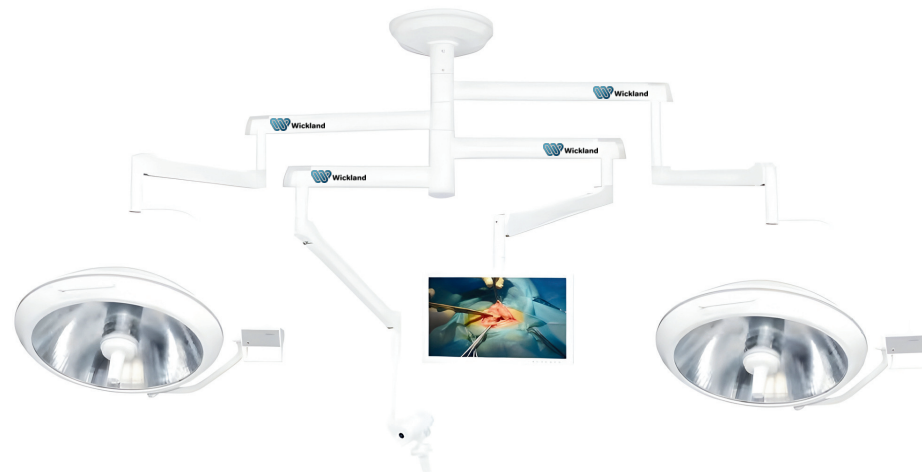
Monitor with ceiling system

Operation lamp with digital HD camera system



● KL- LED•STZ5/STZ5 with camera system

Operation lamp with digital HD camera system



● KL700/700- III with camera system

Technica Specifications

| Mode | 1080P HD CAMERA | Mode | HD DVR |
|---------------------------------|-----------------------------------|-------------------------|---|
| Image Sensor | 1/2.8" Coms | Operating system | Embedded Linux Operating System |
| Signal System | 2,380,000 pixels | System Resources | Multi-channel real-time video, multi-channel real-time playback, USB backup |
| Aspect ratio | 16:9 | Operating interface | Interface 16 true color graphical, mouse support |
| SNR | >50db | Image encoding standard | H.264 |
| Optical zoom | 10x | Video standard | 1080P@30fps |
| Digital zoom | 12x | Play back image quality | 1080P |
| Focal length f | F=3.8mm to 38.0 mm | Video input | HD-SDI |
| The minimum working distance of | 0 mm(wide end) to 800mm(tale end) | Video output | 1 VGA, 1 HDMI |
| Maximum aperture | F1.8 to F3.4 | Grab function | Support JPEG capture function |
| Sensitive illumination color | 0.35 lux | Recordings saved | Local hard disk |
| Auto focus | Yes | Communication | A standard 485 connector |
| Image freeze | Yes | USB | 2 USB connector ports |
| Contrast enhancement | Yes | Internal hard drive | Support two SATA hard disk interface |
| White balance | Automatic and manual | Power supply | 220V±10% 50HZ±2% |
| Video signal output | HD(High Definition): HD-SDI | Power | <15W(without hard drive) |
| Communication protocol | RS-485 | | |



Panorama camera





● KL- LED · ST45/ST45

KL-LED·ST45 series SHADOWLESS OPERATING LAMP

KL-LED.ST45 series LED shadowless operating lamp is suitable for various operation needs. It is a modern ideal surgical lighting equipment operating room and purify the operating room.

Features

- Adopt imported LED cold light source, white the ultra-thin optical lens
- Adopt digital means for stepless regulation of LED brightness.
- Adjust the diameter of light spot diameter and color temperature
- Removable handle sheath, easy to clean and disinfect
- Nano coating of heat sink has created an excellent heat dissipation effect.
- Imported balance arm, lift up and down
- Precise control of the spectral band, filtering out UV and blue light, effectively extending the fixed time of the dental restoration complex.

Specifications

| Mode | KL-LED.ST45 |
|---|--------------|
| Illumination at 1m(lux) | ≥80000 |
| Spot diameter | 100-125 |
| Light Depth | ≥700 |
| Adjustable angle of lamp holder | ≥240 |
| Color rendering index(Ra) | 100≥Ra≥85 |
| Color temperature(K) | 6700≥Tc≥3000 |
| Heat-to-light ratio(mW/m ² lx) | <6 |
| Input power(VA) | 36±10% |



● KL- LED · ST45



KL-LED·MST45 LED SHADOELESS OPERATION LAMP

KL-LED.MST45 LED shadowless operation is suitable for various operation conditions. It is especially for dental implant surgery.

Specifications

| Mode | KL-LED.MST45 |
|---|--------------|
| Illumination at 1m(lux) | ≥80000 |
| Spot diameter | 100-125 |
| Light Depth | ≥700 |
| Adjustable angle of lamp holder | ≥240 |
| Color rendering index(Ra) | 100≥Ra≥85 |
| Color temperature(K) | 6700≥Tc≥3000 |
| Heat-to-light ratio(mW/m ² lx) | <6 |
| Input power(VA) | 36±10% |

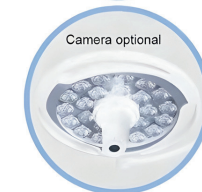
Features

- Adopt imported LED cold light source, white the ultra-thin optical lens
- Adopt digital means for stepless regulation of LED brightness.
- Adjust the diameter of light spot diameter and color temperature
- Removable handle sheath, easy to clean and disinfect
- Nano coating of heat sink has created an excellent heat dissipation effect.
- Imported balance arm, lift up and down
- Precise control of the spectral band, filtering out UV and blue light, effectively extending the fixed time of the dental restoration complex.



● KL- LED·MST45

● KL- LED·MST45 (AC/DC)



KL-LED•MDT61 series SHADOWLESS OPERATING LAMP

KL-LED.MDT61 series LED shadowless operating lamp is suitable for various operation needs. It is a modern ideal surgical lighting equipment operating room and purify the operating room.

Features

- It adopts imported LED cold light source and ultra-thin optical lens
- Adjust the brightness of the LED infinitely in digital
- Having a function of adjusting the spot diameter
- Removable handle cover for easy cleaning and disinfection
- Independent minimally invasive lighting
- With R9 function and color temperature adjustment function
- The spring arm is imported spring, titanium alloy big arm, no welding, to ensure that there is no drift at each angle of 90°

Specifications

| Mode | KL-LED.MDT61 |
|---|---------------|
| Illumination at 1m(lux) | 40000~160000 |
| Illumination at 1m on Endo mode(lux) | 10000 |
| Light filed diameter D10mm | 180±40 |
| D50(mm) | 110±35 |
| Depth of L1+L2 illumination(cm) | 150 |
| Color rendering index(Ra) | 100≥Ra≥85 |
| Red color rending index R9 | ≥97 |
| Optional color temperature(K) | 6700≥Tc≥3000K |
| Number of LEDs | 60 |
| Average bulb life (hours) | 50,000 |
| Heat-to-light ratio(mW/m ² lx) | <6 |
| Power supply | 110-240 V |
| Input power(VA) | 120W |
| Ceiling height for installation(cm) | 270-320 |



● KL- LED•MDT61



● KL- LED•MDT61 (AC/DC)

KL-LED•MSTZ5 series SHADOWLESS OPERATING LAMP

KL-LED.MSTZ5 series LED shadowless operating lamp is suitable for various operation needs. It is a modern ideal surgical lighting equipment operating room and purify the operating room.

Features

- Adopt imported LED cold light source, white the ultra-thin optical lens
- Adopt digital means for stepless regulation of LED brightness.
- Adjust the diameter of light spot and color temperature
- With Endoscopy model
- Removable handle sheath, easy to clean and disinfect
- Nano coating of heat sink has created an excellent heat dissipation effect.
- Imported balance arm, which is flexible up and down

Specifications

| Mode | KL-LED.MSTZ5 |
|---|---------------|
| Illumination at 1m(lux) | 40000~160000 |
| Light field diameter at 1m (cm) | 10-28 |
| D10(mm) | 180±40 |
| Diameter of spot D50(mm) | 110±35 |
| Color rendering index(Ra) | 100≥Ra≥85 |
| Optional color temperature(K) | 6700≥Tc≥3000K |
| Endo model(lux) | 10000 |
| Number of LED bulbs | 45 |
| Average bulb life (hours) | 50,000 |
| Heat-to-light ratio(mW/m ² lx) | <6 |
| Working distance(cm) | 70-140 |
| Max. power consumption(VA) | 90 |



● KL- LED•MSTZ5



● KL- LED•MSTZ5 (AC/DC)

KL-LED•MSZ4 series SHADOWLESS OPERATING LAMP

KL-LED.MSZ4 series LED shadowless operating lamp is suitable for various operation needs. It is a modern ideal surgical lighting equipment operating room and purify the operating room.

Features

- Adopt imported LED cold light source, white the ultra-thin optical lens
- Adopt digital means for stepless regulation of LED brightness.
- Adjust the diameter of light spot and color temperature
- Removable handle sheath, easy to clean and disinfect
- Nano coating of heat sink has created an excellent heat dissipation effect.
- Imported balance arm, which is flexible up and down

Specifications

| Mode | KL-LED.MSZ4 |
|---|--------------|
| Illumination at 1m(lux) | 40000~120000 |
| Light field diameter at 1m (cm) | 10-28 |
| D10(mm) | 180±40 |
| Diameter of spot D50(mm) | 110±35 |
| Color rendering index(Ra) | 100≥Ra≥85 |
| Optional color temperature(K) | 4500±500 |
| Number of LED bulbs | 32 |
| Average bulb life (hours) | 50,000 |
| Heat-to-light ratio(mW/m ² lx) | <6 |
| Working distance(cm) | 70-140 |
| Max. power consumption(VA) | 80 |



● KL- LED•MSZ4

● KL- LED•MSZ4 (AC/DC)

KL01L•II LED SHADOWLESS OPERATING LAMP

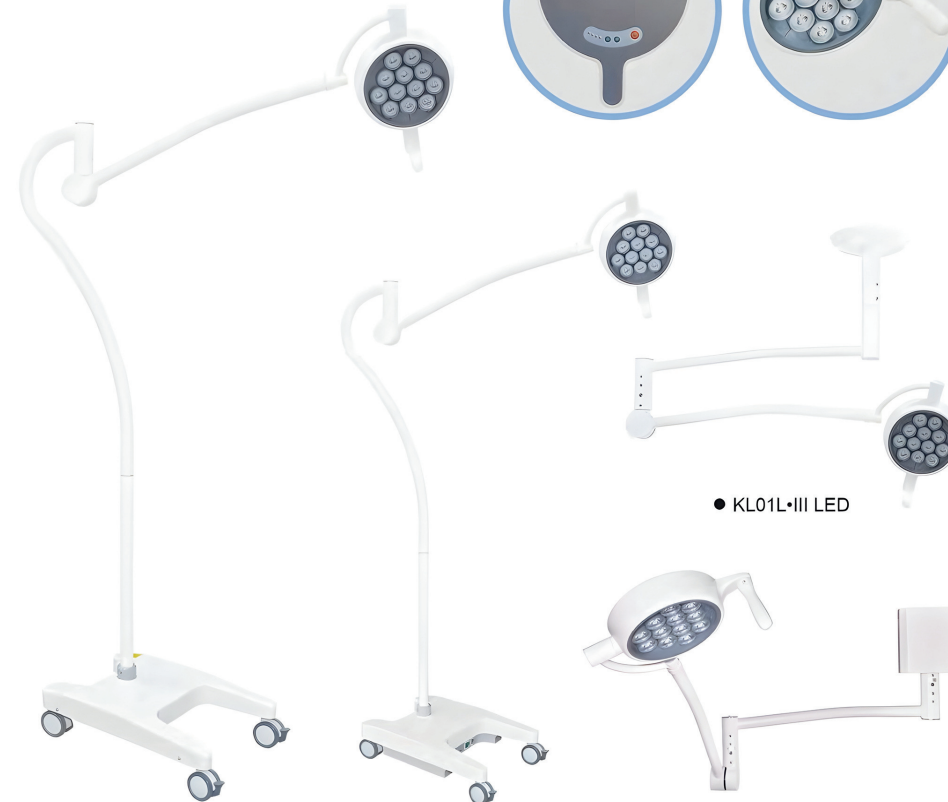
KL01L.II LED shadowless operating lamp is suitable for exam room.

Specifications

| Mode | KL01L.II LED |
|-------------------------------|--------------|
| Illumination at 1m(lux) | ≥60000 |
| Optional color temperature(K) | 4500±500 |
| Input power(VA) | 20 |
| Color rendering index(Ra) | 100≥Ra≥85 |
| Tilt left and right | 160° |
| Tilt front and back | 190° |
| Spring arm adjusted | ≥600 |

Features

- Adopt imported LED cold light source
- Adopt digital means for stepless regulation of LED brightness.
- Unique balance arm design, which is flexible up and down
- AC/DC



● KL01L•III LED

● KL01L•II LED

● KL01L•II LED (AC/DC)

● KL01L•IV LED

KL01L•II LEDTR SHADOWLESS OPERATING LAMP

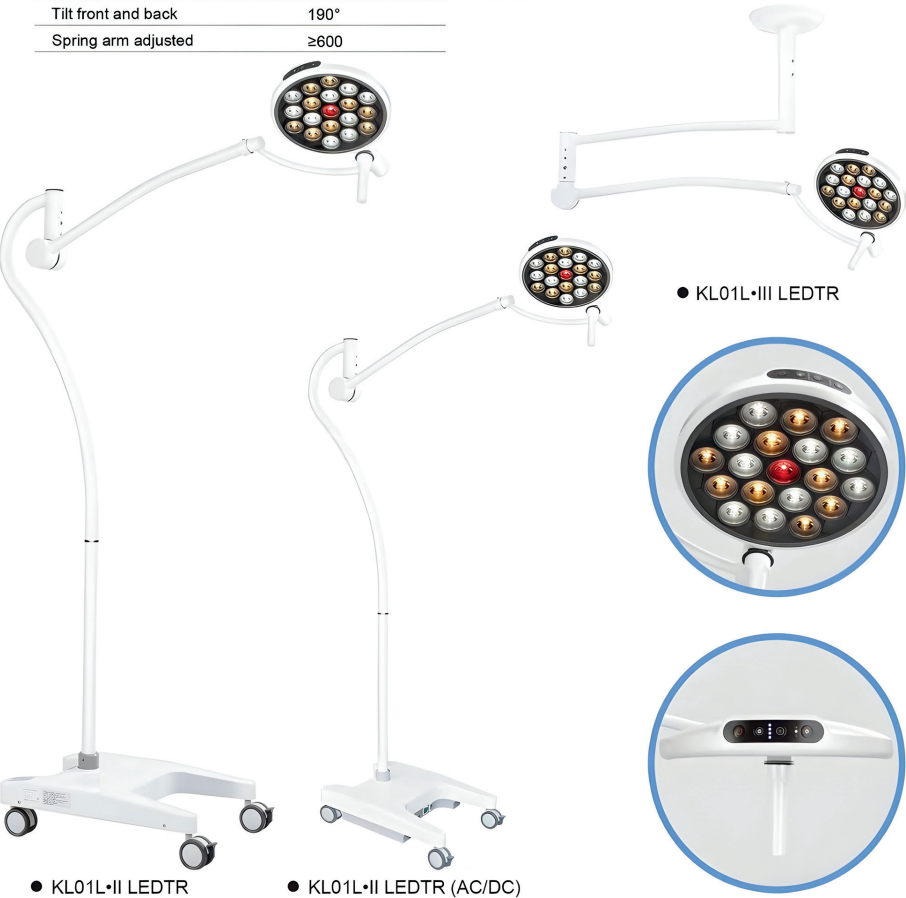
KL01L.II LEDTR shadowless operating lamp is suitable for exam room.

Specifications

| Mode | KL01L.II LEDTR |
|-------------------------------|----------------|
| Illumination at 1m(lux) | ≥80000 |
| Optional color temperature(K) | 6700±Tc≥3500K |
| Input power(VA) | 20 |
| Color rendering index(Ra) | 100≥Ra≥85 |
| Tilt left and right | 160° |
| Tilt front and back | 190° |
| Spring arm adjusted | ≥600 |

Features

- Adopt imported LED cold light source
- Adopt digital means for stepless regulation of LED brightness.
- Adjust color temperature and with R9 function
- Unique balance arm design, which is flexible up and down
- AC/DC



KL01L•I LED KL01L•II LED-I SHADOWLESS OPERATING LAMP

KL01L.I LED, KL01L.I LED-I shadowless operating lamp is suitable for exam room.

Features

- Adopt imported LED cold light source
- Streamlined design, elegant appearance
- Flexible rotation of 180 degrees in front, back, left and right
- AC/DC

Specifications

| Mode | KL01L.I LED |
|--------------------------------|-------------|
| Illumination at 1m(lux) | ≥30000 |
| Color rendering index(Ra) | ≥85% |
| Color temperature(K) | 4500±500 |
| Tilt left and right | 180° |
| Tilt front and back | 180° |
| Height Adjustment distance(mm) | ≥400 |
| Input power(VA) | 20±10% |



KL01L·II LED-II LED EXAMINATION LAMP



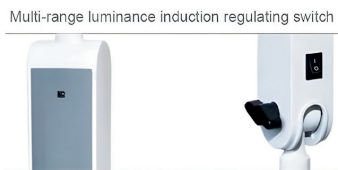
● KL01L·II LED-II



Adopt imported LED cold light source



Unique and beautiful appearance design



Multi-range luminance induction regulating switch

Multi-angle adjustment of lamp arm

Specifications

| Mode | KL01L.II LED-II | Mode | KL01L.IP |
|--------------------------------|-----------------|-----------------------|-------------------|
| Illumination (lux) | ≥30000 | Illumination (lux) | ≥12000 |
| Color temperature(K) | 4500±500 | Color temperature(K) | 3500±500 |
| Color rendering index(Ra) | ≥85% | Power supply | 220±10% 50Hz |
| Tilt left and right | 180° | Rated voltage of bulb | 24V |
| Tilt front and back | 180° | Rated power of bulb | 25W |
| Height Adjustment distance(mm) | ≥400 | Input Power(VA) | 30 |
| | | Note | Cold light source |

KL01L.IP SURGICAL LIGHTING

KL01L.IP is suitable for exams and surgical lighting.



● KL01L.IP

Features

- KL01L.IP adopts cold light bulb.

KL500 series SHADOWLESS OPERATING LAMP

KL500 series shadowless operating lamp is suitable for various operation needs.

It is a modern ideal surgical lighting equipment operating room and purify the operating room.

Features

- Adopt imported power supply to control the voltage. It can make work voltage permanently stable.
- Removable handle sheath, easy to clean and disinfect
- The special radiation filter reducing the heat to the minimum level.
- The depolished panel made of imported material makes the light rays softer.
- The material of reflectors are imported aluminum sheet. No coating film, never fading.
- Light adjustment circuit adopts CPU control, enabling increase or decrease of illumination and boasting brightness memory.
- One lamp holder with two bulbs. When the main bulb is failure, the standby bulb lights automatically. And it has indicators for the damage of main or standby bulb.
- Imported lamp holder and bulb, the average life of bulb is over 1500 hours.
- AC / DC, which is satisfied when the power failure in the surgery.

Specifications

| Mode | KL500 |
|---------------------------------|--------------|
| Illumination at 1m(lux) | 60000-120000 |
| Color temperature(K) | 4500±500 |
| Color rendering index(Ra) | 100≥Ra≥85 |
| Light field diameter at 1m (cm) | 10-28 |
| Depth of light beam(cm) | ≥700 |
| Input Power(VA) | 440+10% |



● KL500-III



● KL500-III (AC/DC)



● KL700/700- III

KL700、500 series SHADOWLESS OPERATING LAMP

KL700 500 series shadowless operating lamp is suitable for various operation needs. It is a modern ideal surgical lighting equipment operating room and purify the operating room.

Features

- Titanium alloy balance arm, no welding, never rust
- Removable handle sheath, easy to clean and disinfect
- The depolished panel made of imported material makes the light rays softer.
- Adopt imported power supply to control the voltage. It can make work voltage permanently stable.
- The special radiation filter reducing the heat to the minimum level.
- The material of reflectors are imported aluminum sheet. No coating film, never fading.
- Imported lamp holder and bulb , the average life of bulb is over 1500 hours.
- Light adjustment circuit adopts CPU control, enabling increase or decrease of illumination and boasting brightness memory.
- One lamp holder with two bulbs. When the main bulb is failure, the standby bulb lights automatically. And it has indicators for the damage of main or standby bulb.



● KL700- III



KL700、500 series SHADOWLESS OPERATING LAMP



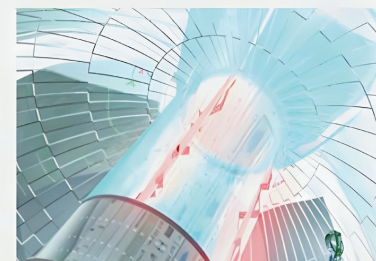
Ideal color temperature

make the light closer to the natural light



Depth Lighting

It adopts imported bulb form Germany. And provides a best beam depth, which is particularly important for deep operation with small incision.



Conductive System

Conductive system adopts imported heat- resistance material, thus promising the working life of shadowless lamp.



The function of filtering system

Adopt the US blue cold light coating technology, the optical filter could effectively filter ultraviolet rays from the spectrum.



Technica Specifications

| Mode | KL 700-III | KL 700/700-III |
|--|------------------------|---------------------------|
| Illumination at 1m(lux) | 80000~160000 | 80000~160000/80000~160000 |
| Color temperature(K) | 4500±500 | 4500±500 |
| Color rendering index(Ra) | 100 ≥ Ra ≥ 85 | 100 ≥ Ra ≥ 85 |
| Light field diameter at 1m (cm) | 10-28 | 10-28 |
| Depth of light beam(cm) | ≥ 700 | ≥ 700 |
| Brightness level adjustment | CPU light-dimmer | CPU light-dimmer |
| The value of total irradiance (mW/m ² lx) | < 6 | < 6 |
| Total irradiance | ≤ 600 W/m ² | ≤ 600 W/m ² |
| Diameter of lamp holder(mm) | 700 | 700 / 700 |
| Shift of major and stand by lamps | Automatic | Automatic |
| Bulb power W(24V) | 150 | 150 / 150 |
| Power supply | 220±20% 50Hz | 220±20% 50Hz |
| Input power(VA) | 200+10% | 400+10% |
| Maximum height for installation(mm) | 2800-3200 | 2800-3200 |

| Mode | KL 700/500-III | KL 500-III |
|--|-----------------------------|------------------------|
| Illumination at 1m(lux) | 80000~160000 / 60000~120000 | 60000~120000 |
| Color temperature(K) | 4500±500 | 4500±500 |
| Color rendering index(Ra) | 100 ≥ Ra ≥ 85 | 100 ≥ Ra ≥ 85 |
| Light field diameter at 1m (cm) | 10-28 | 10-28 |
| Depth of light beam(cm) | ≥ 700 | ≥ 700 |
| Brightness level adjustment | CPU light-dimmer | CPU light-dimmer |
| The value of total irradiance (mW/m ² lx) | < 6 | < 6 |
| Total irradiance | ≤ 600 W/m ² | ≤ 600 W/m ² |
| Diameter of lamp holder(mm) | 700/ 500 | 500 |
| Shift of major and stand by lamps | Automatic | Automatic |
| Bulb power W(24V) | 150 / 150 | 150 |
| Power supply | 220±20% 50Hz | 220±20% 50Hz |
| Input power(VA) | 400+10% | 200+10% |
| Maximum height for installation(mm) | 2800-3200 | 2800-3200 |



● KL700/500- III



KL700、500 series SHADOWLESS OPERATING LAMP



● KL500- III



● KL600/600-II

KL600 series SHADOWLESS OPERATING LAMP

KL600 series shadowless operating lamp is suitable for various operation needs.
It is a modern ideal surgical lighting equipment operating room and purify the operating room.

Features ●

- Titanium alloy balance arm, no welding, never rust
- Removable handle sheath, easy to clean and disinfect
- The depolished panel made of imported material makes the light rays softer.
- Adopt imported power supply to control the voltage. It can make work voltage permanently stable.
- The material of reflectors are imported aluminum sheet. No coating film, never fading.
- Imported lamp holder and bulb , the average life of bulb is over 1500 hours.
- Light adjustment circuit adopts CPU control, enabling increase or decrease of illumination and boasting brightness memory.
- One lamp holder with two bulbs. When the main bulb is failure, the standby bulb lights automatically. And it has indicators for the damage of main or standby bulb.



KL600 series SHADOWLESS OPERATING LAMP



● KL600- II

Technica Specifications ●

| Mode | KL600-II | KL600/600-II |
|--|------------------------|-----------------------------|
| Illumination at 1m(lux) | 80000~140000 | 80000-140000 / 80000-140000 |
| Color temperature(K) | 4500±500 | 4500±500 |
| Color rendering index(Ra) | 100 ≥ Ra ≥ 85 | 100 ≥ Ra ≥ 85 |
| Light field diameter at 1m (cm) | 10-28 | 10-28 |
| Depth of light beam(cm) | ≥ 700 | ≥ 700 |
| Brightness level adjustment | CPU light-dimmer | CPU light-dimmer |
| The value of total irradiance (mW/m ² lx) | < 6 | < 6 |
| Total irradiance | ≤ 600 W/m ² | ≤ 600 W/m ² |
| Diameter of lamp holder(mm) | 600 | 600 / 600 |
| Shift of major and stand by lamps | Automatic | Automatic |
| Bulb power W(24V) | 150 | 150 / 150 |
| Power supply | 220±20% 50Hz | 220±20% 50Hz |
| Input power(VA) | 220+10% | 440+10% |
| Maximum height for installation(mm) | 2800-3200 | 2800-3200 |

KL04L series SURGICAL LIGHTING

KL04L.I(AC/DC) KL04L.III is suitable for surgical lighting, with brakes.
KL04L.I(AC/DC) with battery is more suitable for power failure.



● KL04L.I (AC/DC)

● KL04L

● KL04L.III

Specifications

| Mode | KL04L.I(AC/DC) | KL04L.III |
|--|---------------------|-----------|
| Illumination at 1m(lux) | 60000 | |
| Optional color temperature(K) | 4500±500 | |
| Color rendering index(Ra) | 100≥Ra≥85 | |
| Power supply(AC) | 220V±10% 50HZ DC24V | |
| The value of the total irradiance (service range for temperature rise≤10℃) | <6mW/m2lx | |
| Total irradiance (Temperature rise on the head of patient under surgical operations≤2℃) | ≤600W/m2 | |
| Rated voltage of bulb | 24V | |
| Rated power of bulb | 100W | |
| Input power(VA) | 180 | |



KL05L series SURGICAL LIGHTING

KL05L is suitable for surgical lighting.

Specifications

| Mode | KL05L | KL05L.I(AC/DC) | KL05L.III |
|--|--------------|----------------|-----------|
| Illumination at 1m(lux) | 80000 | | |
| Color temperature(K) | 4000±500 | | |
| Color rendering index(Ra) | 100≥Ra≥85 | | |
| Depth of light beam(cm) | ≥500 | | |
| The value of total irradiance | <6mW/m2lx | | |
| Total irradiance (Temperature rise on the head of patient under surgical operations≤2℃) | ≤600W/m2 | | |
| Power supply | 220±10% 50Hz | | |
| Rated voltage of bulb | 24V | | |
| Rated power of bulb | 125W | | |
| Input power(VA) | 150 | | |



● KL05L

Notes: the bulb is cold light source



● KL05L.I (AC/DC)



● KL05L.III

KL04L LED series SURGICAL LIGHTING

KL04L LED series is suitable for surgical lighting, with brakes.



Notes: the bulb is LED



● KL04L.I (LED AC/DC)



● KL04L.III (LED)

KL05L LED series SURGICAL LIGHTING

KL05L LED is suitable for surgical lighting.



● KL05L

Notes: the bulb is LED



● KL05L.I (LED AC/DC)



● KL05L.III (LED)



Technical Specifications

| Mode | KL09L |
|---|------------------------|
| Illumination (lux) | 140000 |
| Color temperature(K) | 4000±500 |
| Color rendering index(Ra) | 100 ≥ Ra ≥ 85 |
| Depth of light beam(cm) | ≥ 500 |
| The value of total irradiance (mW/m ² lx) | < 6 |
| Total irradiance(Temperature rise on the head of patient under surgical operation ≤ 2℃) | ≤ 600 W/m ² |
| Power supply | 220±10% 50Hz |
| Rated voltage of bulb | 24V |
| Rated power of bulb | 225W |
| Input power(VA) | 280 |

| Mode | KL12L |
|---|------------------------|
| Illumination (lux) | 160000 |
| Color temperature(K) | 4000±500 |
| Color rendering index(Ra) | 100 ≥ Ra ≥ 85 |
| Depth of light beam(cm) | ≥ 500 |
| The value of total irradiance (mW/m ² lx) | < 6 |
| Total irradiance(Temperature rise on the head of patient under surgical operation ≤ 2℃) | ≤ 600 W/m ² |
| Power supply | 220±10% 50Hz |
| Rated voltage of bulb | 24V |
| Rated power of bulb | 300W |
| Input power(VA) | 350 |

| Mode | KL1205L |
|---|------------------------|
| Illumination of main lamp (lux) | 160000 |
| Illumination of supplementary lamp (lux) | 80000 |
| Color temperature(K) | 4000±500 |
| Color rendering index(Ra) | 100 ≥ Ra ≥ 85 |
| Depth of light beam(cm) | ≥ 500 |
| The value of total irradiance (mW/m ² lx) | < 6 |
| Total irradiance(Temperature rise on the head of patient under surgical operation ≤ 2℃) | ≤ 600 W/m ² |
| Power supply | 220±10% 50Hz |
| Rated voltage of bulb | 24V |
| Rated power of bulb | 425W |
| Input power(VA) | 500 |



● KL1205L



KL09L KL12L KL1205L series SURGICAL LIGHTING

KL09L KL12L KL1205L use multiple different sources, by focus knob to illuminate the surgical and examination sites from different positions, reducing the shadow caused by the head and hands of the medical staff. The illumination can be adjusted according to the actual needs. These lamps if for surgical lighting.



● KL09L

● KL12L

● KL12L (LED)



◆ KL- D•III - I

KL-D•III-I

ELECTRIC OPERATING TABLE

KL-D.III-I is applied for various operating in medical units.

Features ◆

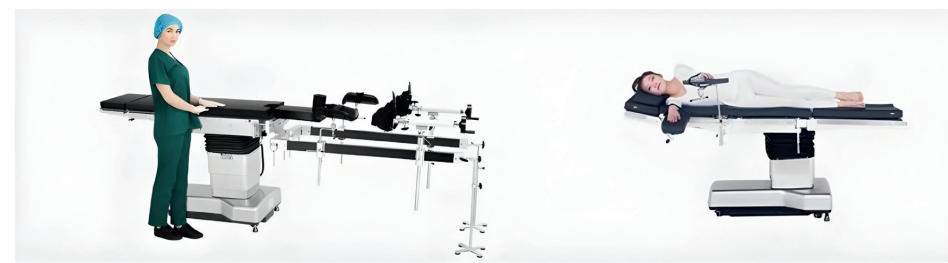
- ◆ The tabletop adopts high quality of carbon plastic plate, and it can slide, which is convenient for C arm exam and X-ray photography.
- ◆ The mattress is wrapped with imported artificial leather. High-density memory sponge is formed in one piece, with no seam.
- ◆ Hand held controller and panel controller are available to control various movements. Self-locking function is provided to avoid false triggering.
- ◆ One press to "Λ" or "V".
- ◆ All system from HOERBIGER
- ◆ AC and DC can use at the same time. It has the function of auto-restoration.
- ◆ Quality stainless steel 304 is used for table support, base plate, column shield and rails on both sides of the table and other accessories.
- ◆ Electric braking device, convenient for shifting the table.
- ◆ The head board and leg plate are controlled by imported gas spring. Leg plate is split and detachable.



Accessories ◆

A Pair of Shoulder/Waist Support, A Pair of Arm Support, A Pair of Leg Plate, A Screen

KL-D•III-I





◆ KL-D•III-II (ultra-low position)

KL-D•III-II

ELECTRIC OPERATING TABLE

KL-D.III-II (ultra-low position) electric operating table is suitable for various operations in medical units.

Features

- ◆ The bed surface is made of high-quality carbon plastic board, and the table surface can be moved longitudinally to meet the needs of C-arm whole body inspection and filming.
- ◆ The mattress is made of imported artificial leather wrapped with high-density memory foam and formed at one time with no seam.
- ◆ There are two control modes: hand-held remote controller and panel controller, with self-locking function.
- ◆ With one-key forming and "V" shape, it is convenient for operation.
- ◆ The complete hydraulic system adopts the German HO ERBIGER brand.
- ◆ AC and DC, CPU control, with one-key reset function.
- ◆ The countertop support frame, the rails on both sides and its accessories are all made of high-quality 304 stainless steel, and the base and column cover are made of stainless steel for one-time molding.
- ◆ Electric brake device facilitates the displacement of the operating table.
- ◆ The head and leg plates are controlled by imported gas springs, and the leg plates are split and detachable.
- ◆ Ultra-low design.



Accessories

Shoulder Support 1pc, Waist Support 1pc, Arm Support 2pcs, High-level Arm Support 1pc, Leg Support 2pcs, Screen 1pc

KL-D•III-II



KL-D•III



◆ KL-D • III

KL-D•III ELECTRIC OPERATING TABLE

KL-D.III is applied for various operating in medical units.

Features ◆

- ◆ The tabletop adopts high quality of carbon plastic plate, and it can slide, which is convenient for C arm exam and X-ray photography.
- ◆ The mattress is wrapped with imported artificial leather. High-density memory sponge is formed in one piece, with no seam.
- ◆ Using electro-hydraulic working principle. Hand held controller and panel controller are available to control various movements. Self-locking function is provided to avoid false triggering.
- ◆ Hydraulic system from HOERBIGER
- ◆ AC and DC can use at the same time. It has the function of auto-restoration.
- ◆ One press to "Λ" or "V".
- ◆ Imported sealing ring
- ◆ The table support frame is made of aluminum alloy die-casting and will never rust.
- ◆ The base and rails on both sides of the table are 304 stainless steel.
- ◆ Electric braking device, convenient for shifting the table.
- ◆ The leg plate are controlled by imported gas spring. Leg plate is split and detachable.



Accessories ◆

A Pair of Shoulder/Waist Support, A Pair of Arm Support, A Pair of Leg Plate, A Screen



◆ KL-D.III-III

KL-D•III-III

ELECTRIC OPERATING TABLE

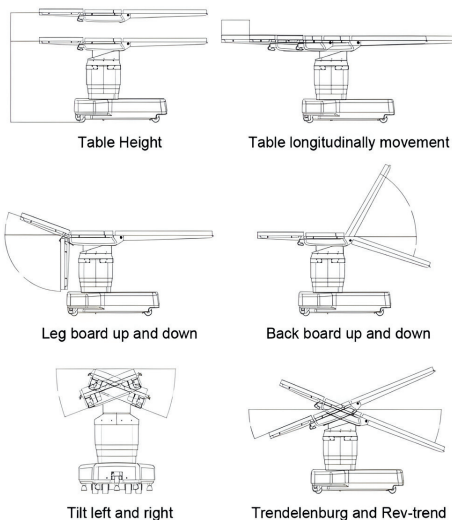
KL-D.III-III electric operating table (new) is specially designed for medical imaging equipment. The product adopts electro-hydraulic drive technology and adopts a humanized design concept to meet the special needs of imported high-end medical imaging equipment such as the current orthopedic navigation system in orthopedic surgery. The bed board adopts carbon fiber board. It satisfies the high-definition perspective imaging effect. It is the optimal operating table equipment for modern orthopedic navigation surgery.

Features

- ◆ The backboard of the table is made of metal-free carbon fiber board, and the table can be moved longitudinally to meet the needs of 3D and orthopedic navigation systems for 360° X-ray photography.
- ◆ Imported high-precision linear guide rails ensure smooth operation of the operating table.
- ◆ The mattress is made of imported artificial leather wrapped with high-density memory foam and formed at one time with no seam.
- ◆ There are two control modes: hand-held remote controller and bed controller, with self-locking function.
- ◆ The complete hydraulic system adopts the German HOERBIGER brand.
- ◆ AC and DC, CPU control, with one-key reset function.
- ◆ The countertop support frame, rails on both sides and accessories are all made of high-quality 304 stainless steel.
- ◆ The base and column cover are made of stainless steel by one-time molding.
- ◆ Built-in casters, united with electric brake device, convenient for operating table shift.
- ◆ The leg plates are controlled by imported gas springs, and the leg plates are split and detachable.

Accessories

High-level Arm Support 1pc, Leg Support 2pcs



KL-D•III-III

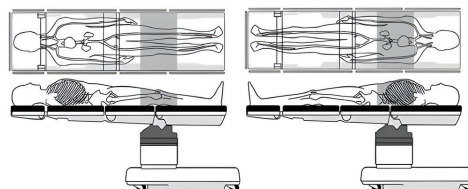


KL-D·V

KL-D·V electric operating table is suitable for various operations performed by medical units. It is simple and convenient.

Features

- ◆ The complete hydraulic system adopts the German HOERBIGER brand.
- ◆ The head board can be inserted into the leg board, which can meet the needs of whole body barrier-free C-arm inspection and filming.
- ◆ The mattress is made of imported artificial leather wrapped with high-density memory foam and formed at one time without any gaps.
- ◆ There are two control modes: handheld remote control and panel controller, with self-locking function.
- ◆ With one key to form "Λ" shape and "V" shape, it is convenient for operation.
- ◆ AC and DC dual purpose, CPU control, with one-key reset function.
- ◆ The table support frame is made of aluminum alloy die-casting, which will never rust.
- ◆ The side rails and accessories of the table are made of high-quality 304 stainless steel, the base and the column cover are made of stainless steel for one-time molding.
- ◆ Built-in casters, combined with electric brakes, which can shift the operating table.



The head plate can be inserted into the leg plate



◆ KL-D·V

Accessories

One pair of shoulder support, one pair of waist support, one pair of arm support, one high-rise arm support, one pair of leg support, one screen frame

KL-D·V





◆ KL- D • IA - II

KL-D•IA-II

ELECTRIC OPERATING TABLE

KL- D•IA-II electric operating table is suitable for various operations in medical units.

Features

- ◆ The base and column cover, table top and rails on both sides are all made of 304 stainless steel.
- ◆ The bed surface is made of high-quality carbon plastic panels, which can meet X-ray inspection and filming.
- ◆ It adopts electro-hydraulic working principle, has AC and DC dual functions, and controls various actions through dual controllers.
- ◆ The mattress is made of imported artificial leather wrapped with high-density memory foam and formed at one time with no seam.
- ◆ Imported motors, pipelines and solenoid valves.
- ◆ Imported sealing ring, durable.
- ◆ Built-in casters, combined with electric brakes, facilitate the displacement of the operating table.
- ◆ The head plate and leg plates are controlled by imported gas springs, and the leg plates are split and detachable.



Accessories

Shoulder Support 1pc, Waist Support 1pc, Arm Support 2pcs, Leg Support 2pcs, Screen 1pc

Features

- ◆ super low level design.
- ◆ Quality stainless steel 304 is used for table support, base plate, column shield and rails on both sides of the table.
- ◆ The tabletop adopts high quality of carbon plastic plate, which is convenient for X-ray exam and photography.
- ◆ Using electro-hydraulic working principle, with AC and DC, control various actions through dual controllers.
- ◆ The mattress is wrapped with imported artificial leather. High-density memory sponge is formed in one piece, with no seam.
- ◆ Imported motors, pipelines and solenoid valves.
- ◆ Electric braking device, convenient for shifting the table.
- ◆ The head board and leg plate are controlled by imported gas spring. Leg plate is split and detachable.



Tilt left and right

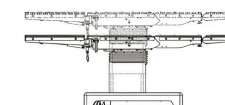
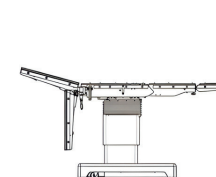
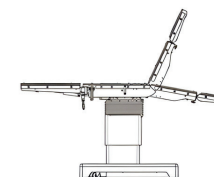


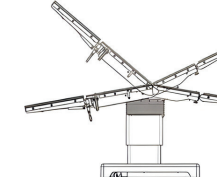
Table Height



Leg board up and down



Back board up and down



One press to "A" or "V"



Trendelenburg and Rev-trend



super low level

◆ KL- D•IA - I(super low level)

Accessories

Shoulder Support 1pc, Waist Support 1pc, Arm Support 2pcs, Leg Support 2pcs, Screen 1pc



◆ DL-C

DL-C

ELECTRIC OPERATING TABLE

DL-C electric operating table is a comprehensive multi-function, which can meet the needs of various operations.

Features ◆

- ◆ Various actions are controlled by hand-held remote controller.
- ◆ The base and column cover are 304 stainless steel.
- ◆ The mattress is made of high-quality artificial leather wrapped with high-density sponge - one-time molding.
- ◆ Brand motor, no noise, long service life.
- ◆ Foot-operated brake device, which is easy to move the operating table.
- ◆ The legs are controlled by gas springs. Leg plates are split and detachable.



split leg plate


hand-held remote controller
foot-operated brake

Accessories ◆

One pair of shoulder/waist supports, A pair of arm rests, A pair of leg supports, A screen

DL-C



waist bridge raised



Humanized accessory design



curve(lower corner)



re-curve(upper corner)



lift smoothly



Tilt left and right



Trendelenburg and Rev-TrendTrendelenburg and Rev-Trend

DL•A

ELECTRIC OPERATING TABLE

DL.A has multi- function. It can fulfill the needs of various operations.

Features

- ◆ The tabletop adopts high quality of carbon plastic plate, and it can slide, which is convenient for C arm exam and X-ray photography.
- ◆ AC and DC, dual remote control to control various actions
- ◆ The mattress is wrapped with imported artificial leather. High-density memory sponge is formed in one piece, with no seam.
- ◆ Imported brand LINAK motor, with no noise, long life
- ◆ Quality stainless steel 304 is used for table support, base plate, column shield and rails on both sides of the table.
- ◆ Foot pedal brake device which is easy for moving the operating table.
- ◆ The head board and leg plate are controlled by imported gas spring. Leg plate is split and detachable.
- ◆ It has the function of auto-restoration.
- ◆ One press to "Λ" or "V".

Accessories

A Pair of Shoulder/Waist Support, A Pair of Arm Support, A Pair of Leg Plate, A Screen



◆ DL•A

DL•A



DL•C-I



◆ DL•C - I

DL•C - I

ELECTRIC OPERATING TABLE

DL.C-I has multi- function. It can fulfill the needs of various operations.

Features ◆

- ◆ The tabletop adopts high quality of carbon plastic plate, which is convenient for X-ray photography.
- ◆ AC and DC, dual remote control to control various actions
- ◆ Quality stainless steel 304 is used for table support, base plate, column shield and rails on both sides of the table.
- ◆ The mattress is wrapped with imported artificial leather. High-density memory sponge is formed in one piece, with no seam.
- ◆ Imported brand LINAK motor, with no noise, long life
- ◆ Foot pedal brake device which is easy for moving the operating table.
- ◆ The head board and leg plate are controlled by imported gas spring.
Leg plate is split and detachable.
- ◆ It has the function of auto-restoration.
- ◆ One press to "Λ" or "V".



Accessories ◆

A Pair of Shoulder/Waist Support, A Pair of Arm Support, A Pair of Leg Plate, A Screen

Technical Specifications

| Mode | KL-D.III-I | KL-D.III-II | KL-D.III |
|--------------------------------------|------------------|------------------|------------------|
| Length | 2000±100mm | 2000±100mm | 2000±100mm |
| Width | 520±20mm | 520±20mm | 520±20mm |
| Height Adjustment | (750~1100)±50mm | (650~1100)±50mm | (700~1100)±50mm |
| Tilt(left) / Tilt(right) | ≥15° / ≥15° | ≥20° / ≥20° | ≥18° / ≥18° |
| Trendelenburg / Rev-Trend | ≥20° / ≥20° | ≥30° / ≥30° | ≥25° / ≥35° |
| Head board upwards | ≥50° | ≥50° | ≥50° |
| Head board downwards | ≥90° | ≥90° | ≥90° |
| Back board upwards | ≥70° | ≥70° | ≥70° |
| Backboard downwards | ≥40° | ≥40° | ≥30° |
| Waist board lifting | 100±20mm | 100±20mm | 100±20mm |
| Leg board Upwards | ≥15° | ≥20° | ≥10° |
| Leg board Downwards | ≥90° | ≥90° | ≥90° |
| Leg board Outwards | ≥180° | ≥180° | ≥180° |
| Lumbar upper corner "Λ" | ≤150° | ≤150° | ≤150° |
| Lumbar lower corner "V" | ≤110° | ≤110° | ≤110° |
| Horizontal and longitudinal movement | 400±30mm | 400±30mm | 300±30mm |
| Main Voltage AC | 220V±22V, 50±1Hz | 220V±22V, 50±1Hz | 220V±22V, 50±1Hz |
| Input power VA | 400±10% | 400±10% | 400±10% |

| Mode | KL-D.III-III | KL-D.V |
|--------------------------------------|------------------|------------------|
| Length | 2290±100mm | 2000±100mm |
| Width | 520±20mm | 520±20mm |
| Height Adjustment | (750~1150)±30mm | (720~1020)±50mm |
| Tilt(left) / Tilt(right) | ≥15° / ≥15° | ≥18° / ≥18° |
| Trendelenburg / Rev-Trend | ≥20° / ≥25° | ≥26° / ≥17° |
| Head board upwards | ≥45° | ≥90° |
| Head board downwards | ≥90° | ≥90° |
| Back board upwards | ≥70° | ≥58° |
| Backboard downwards | ≥25° | ≥16° |
| Waist board lifting | 100±20mm | 100±20mm |
| Leg board Upwards | ≥10° | ≥79° |
| Leg board Downwards | ≥90° | ≥90° |
| Leg board Outwards | ≥180° | |
| Lumbar upper corner "Λ" | ≤150° | ≤150° |
| Lumbar lower corner "V" | ≤120° | ≤120° |
| Horizontal and longitudinal movement | 350±30mm | |
| Main Voltage AC | 220V±22V, 50±1Hz | 220V±22V, 50±1Hz |
| Input power VA | 500±10% | 500±10% |

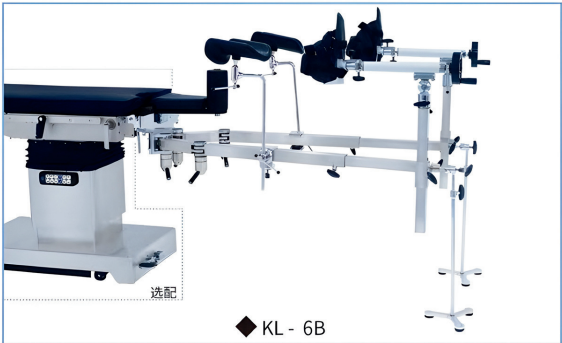
Technical Specifications

| Mode | KL-D.IA-I | KL-D.IA-II |
|--------------------------------------|------------------|------------------|
| Length | 2000±100mm | 2000±100mm |
| Width | 520±20mm | 520±20mm |
| Height Adjustment | (560~860)±50mm | (700~1000)±50mm |
| Tilt(left) / Tilt(right) | ≥20° / ≥20° | ≥15° / ≥15° |
| Trendelenburg / Rev-Trend | ≥20° / ≥18° | ≥20° / ≥15° |
| Head board upwards | ≥50° | ≥45° |
| Head board downwards | ≥90° | ≥90° |
| Back board upwards | ≥70° | ≥70° |
| Backboard downwards | ≥20° | ≥20° |
| Waist board lifting | 100±20mm | 100±20mm |
| Leg board Upwards | ≥15° | ≥10° |
| Leg board Downwards | ≥90° | ≥90° |
| Leg board Outwards | ≥180° | ≥180° |
| Lumbar upper corner "Λ" | ≤160° | ≤160° |
| Lumbar lower corner "V" | ≤105° | ≤105° |
| Horizontal and longitudinal movement | | |
| Main Voltage AC | 220V±22V, 50±1Hz | 220V±22V, 50±1Hz |
| Input power VA | 500±10% | 500±10% |

| Mode | DL.A | DL.C | DL.C-I |
|--------------------------------------|------------------|------------------|------------------|
| Length | 2000±100mm | 2000±100mm | 2000±100mm |
| Width | 520±20mm | 500±20mm | 520±20mm |
| Height Adjustment | (750~1100)±50mm | (750~1000)±50mm | (750~1100)±50mm |
| Tilt(left) / Tilt(right) | ≥15° / ≥15° | ≥15° / ≥15° | ≥15° / ≥15° |
| Trendelenburg / Rev-Trend | ≥18° / ≥18° | ≥15° / ≥15° | ≥15° / ≥15° |
| Head board upwards | ≥40° | ≥50° | ≥40° |
| Head board downwards | ≥90° | ≥90° | ≥90° |
| Back board upwards | ≥70° | ≥70° | ≥60° |
| Backboard downwards | ≥15° | ≥30° | ≥30° |
| Waist board lifting | 100±20mm | 100±20mm | 100±20mm |
| Leg board Upwards | ≥15° | ≥20° | ≥15° |
| Leg board Downwards | ≥90° | ≥90° | ≥90° |
| Leg board Outwards | ≥180° | ≥180° | ≥180° |
| Lumbar upper corner "Λ" | ≤150° | ≤150° | ≤150° |
| Lumbar lower corner "V" | ≤120° | ≤120° | ≤120° |
| Horizontal and longitudinal movement | 350±30mm | | |
| Main Voltage AC | 220V±22V, 50±1Hz | 220V±22V, 50±1Hz | 220V±22V, 50±1Hz |
| Input power VA | 300±10% | 300±10% | 300±10% |

KL-6 series

ORTHOPAEDICS TRACTOR



Specifications

| Mode | KL-6B | KL-6D |
|--------------------------------------|-------------|-------------|
| Length | 1420±50mm | 1550±50mm |
| Width | 765±50mm | 450±50mm |
| Traction device horizontal rotary | 0-180° | 0-180° |
| Traction distance mm | (0-200)±10% | (0-140)±10% |
| Traction device height adjustment mm | ≥400 | ≥190 |

KL-6 series

ORTHOPAEDICS TRACTOR

The KL-6 series of traction frames are mainly used for surgery in patients with fractures or dislocations, and traction reduction of the fracture or dislocation of the patient. Can be used in combination with various types of operating tables



Features

- ◆ Adopt carbon fiber material, the perspective imaging is clear, light and strong.
- ◆ The plug-in design is convenient and quick to connect with the operating table.
- ◆ Equipped with a traction frame accessory car, which is convenient to move and save space.

Specifications

| Mode | KL-6C |
|--------------------------------------|-------------|
| Length | 1700±10mm |
| Width | 750±100mm |
| Traction device horizontal rotary | 0-180° |
| Traction distance mm | (0-200)±10% |
| Traction device height adjustment mm | ≥400 |



3009A OPERATING TABLE

3009A is applied for various operating in medical units.

Features

- ◆ Hydraulic, pneumatic and mechanical transmission control various actions
- ◆ All the actions are controlled by handle under the head board
- ◆ Imported sealing ring with long life
- ◆ The table surface adopts quality carbon plastic plate which is easily for conducting X-ray examination and photography.
- ◆ Quality stainless steel 304 is used for rails on both sides of the table.
- ◆ The base is made of high-strength ABS, easy to clean and disinfect.
- ◆ The mattress is wrapped with imported artificial leather. High-density memory sponge is formed in one piece, with no seam.
- ◆ Foot pedal brake device which is easy for moving the operating table.

Accessories

A Pair of Shoulder/Waist Support, A Pair of Arm Support, A Pair of Leg Plate, A Screen



◆ 3009A

3009C OPERATING TABLE

3009C is applied for various operating in medical units.

Features

- ◆ Hydraulic, pneumatic and mechanical transmission control various actions
- ◆ The head board can put into leg plate, which can make the bed do C-arm exam and X-ray photography.
- ◆ Imported sealing ring with long life
- ◆ Quality stainless steel 304 is used for table support and base plate, which is easily cleaning and disinfection.
- ◆ Foot pedal brake device which is easy for moving the operating table.

Accessories

A Pair of Shoulder/Waist Support, A Pair of Arm Support, A Pair of Leg Plate, A Screen



◆ 3009C



◆ 3009C

3009D OPERATING TABLE

3009D is applied for various operating in medical units.

Features

- ◆ Hydraulic, pneumatic and mechanical transmission control various actions
- ◆ The tabletop can be rotated 360°
- ◆ Imported sealing ring with long life
- ◆ The tabletop adopts high quality of carbon plastic plate, which is convenient for X-ray photography and exam.
- ◆ Quality stainless steel 304 is used for rails on both sides of the table.
- ◆ The table support frame is made of alloy aluminum die-casting and never rusts.
- ◆ The mattress is wrapped with imported artificial leather. High-density memory sponge is formed in one piece, with no seam.
- ◆ Quality stainless steel 304 is used for table support and base plate, which is easily cleaning and disinfection.
- ◆ Foot pedal brake device which is easy for moving the operating table.

Accessories

A Pair of Shoulder/Waist Support, A Pair of Arm Support, A Pair of Leg Plate, A Screen



◆ 3009D

| Mode | 3009D | 3009C | 3009A |
|---------------------------|-----------------|----------------|----------------|
| Length | 2000±50mm | 2000±50mm | 2000±50mm |
| Width | 500±20mm | 500±20mm | 500±20mm |
| Height Adjustment | (740~1100)±50mm | (700~950)±50mm | (700~950)±50mm |
| Horizontal rotatory | 360° | | |
| Tilt(left) / Tilt(right) | ≥25° / ≥25° | ≥15° / ≥15° | ≥15° / ≥15° |
| Trendelenburg / Rev-Trend | ≥20° / ≥15° | ≥15° / ≥15° | ≥15° / ≥15° |
| Head board upwards | ≥30° | ≥30° | ≥30° |
| Head board downwards | ≥90° | ≥90° | ≥90° |
| Back board upwards | ≥60° | ≥60° | ≥70° |
| Backboard downwards | ≥10° | ≥20° | ≥15° |
| Leg board Downwards | ≥90° | ≥90° | ≥90° |
| Leg board Outwards | ≥180° | | |
| Leg board Split | | | ≥180° |
| Lumbar upper corner "Λ" | ≤170° | | |
| Lumbar lower corner "V" | ≤120° | | |
| Waist board Lifting | | | ≥70 |

3001 series OPERATING TABLE

3001 series operating table have multi- function. It can fulfill the needs of various operations.

Features

- ◆ Imported sealing ring with long life
- ◆ With brake device
- ◆ All of actions are controlled by both sides.

Accessories

A Pair of Shoulder/Waist Support, A Pair of Arm Support, A Pair of Leg Plate, A Screen

Notes

- ◆ 3001 The tabletop and the base are made of high quality cold plate spray
- ◆ 3001A The base and the column are made of high quality of 304 stainless steel
- ◆ 3001B The base and the column are made of high quality of 304 stainless steel, Double top, Separate leg part and detachable



◆ 3001



◆ 3001A

Specifications

| Mode | 3001 series | Mode | 3001 series |
|---------------------------|----------------|------------------------|-------------|
| Length | 2100±50mm | Head board downwards | ≥90° |
| Width | 500±20mm | Back board upwards | ≥75° |
| Height Adjustment | (750~950)±50mm | Backboard downwards | ≥18° |
| Tilt(left) / Tilt(right) | ≥15° / ≥15° | Leg board Downwards | ≥90° |
| Trendelenburg / Rev-Trend | ≥20° / ≥15° | Leg board Split(3001B) | ≥180° |
| Head board upwards | ≥40° | Waist Board Lifting mm | 100±20mm |



◆ 3001B

KL-1A MANUAL OR TABLE

KL-1A operating table is suitable for various operations conducted by medical unit.

Features

- ◆ The base and the column are made of high quality of 304 stainless steel.
- ◆ Hand screw lift table
- ◆ The back plate is geared and the leg plate is ratcheted.

Accessories

A Pair of Shoulder/Waist Support, A Pair of Arm Support, A Pair of Leg Plate, A Screen



◆ KL - 1A

Specifications

| Mode | KL-1A | Mode | KL-1A |
|----------------------|-----------------|------------------------|----------|
| Length | 2100±50mm | Back board upwards | ≥80° |
| Width | 480±20mm | Backboard downwards | ≥30° |
| Height Adjustment | (800~1050)±50mm | Leg board Downwards | ≥90° |
| Head board upwards | ≥45° | Waist Board Lifting mm | 100±20mm |
| Head board downwards | ≥90° | | |

3008 series OPERATING TABLE

3008 series operating table have multi- function. It can fulfill the needs of various operations.

Features

- ◆ Imported sealing ring with long life
- ◆ with brake device
- ◆ All of actions are controlled by handle under head board.

Accessories

- A Pair of Shoulder/Waist Support, A Pair of Arm Support,
- A Pair of Leg Plate, A Screen

Notes

- 3008 The tabletop and the base are made of high quality cold plate spray
- 3008A The base and the column are made of high quality of 304 stainless steel
- 3008B The base and the column are made of high quality of 304 stainless steel, Separate leg plate
- 3008C The base and the column are made of high quality of 304 stainless steel, Double top, Separate leg part and detachable



Specifications

| Mode | 3008 series | Mode | 3008 series |
|---------------------------|----------------|------------------------|-------------|
| Length | 2050±50mm | Head board upwards | ≥30° |
| Width | 500±20mm | Head board downwards | ≥90° |
| Height Adjustment | (750~950)±50mm | Back board upwards | ≥75° |
| Tilt(left) / Tilt(right) | ≥20° | Backboard downwards | ≥5° |
| Trendelenburg / Rev-Trend | ≥20° | Leg board outwards | ≥90° |
| Waist Board Lifting mm | 100±20mm | Leg board Split(3008C) | ≥180° |



YS•A ELECTRIC EYE OR TABLE

YS.A, YS.B electric operating table for eye surgery is one of the eye operating table designed and developed according to the special requirements of operation, can fulfill the needs of eye surgery.

Features ◆ [YS.A]

- ◆ The super low level design can enable doctor to conduct operation sitting by operating table.
- ◆ Adopt electric double cylinder elevating with stable performance.
- ◆ Imported motor and electromagnetic valve
- ◆ The base seat and upright column covering are made of high quality 304 stainless steel which is anti-corrosive and can be easily clean
- ◆ Electric brake device

Accessories ◆ [YS.A]

A pair of Arm Support, a Headrest with U-shaped, a Pair of Arm Support

Specifications ◆

| Mode | YS.A | Mode | YS.A |
|---------------------------|----------------|----------------------|------------------|
| Length | 1950±50mm | Head board upwards | ≥50° |
| Width | 600±20mm | Head board downwards | ≥90° |
| Height Adjustment | (500~800)±50mm | Main Voltage AC | 220V±22V, 50±1Hz |
| Trendelenburg / Rev-Trend | ≥15° / ≥15° | Input power VA | 500±10% |

YS•B EYE OR TABLE

Features ◆ [YS.B]

- ◆ The super low level design can enable doctor to conduct operation sitting by operating table.
- ◆ Hydraulic lift with pedal
- ◆ Imported sealing ring and is durable
- ◆ The base is made of high-strength ABS, which is corrosion-resistant and easy to clean.
- ◆ Foot pedal device

Accessories ◆ [YS.B]

A pair of Arm Support, a Headrest with U-shaped, a Pair of Arm Support

Specifications ◆

| Mode | YS.B | Mode | YS.B |
|-------------------|----------------|----------------------|------|
| Length | 1950±50mm | Head board upwards | ≥50° |
| Width | 600±20mm | Head board downwards | ≥90° |
| Height Adjustment | (560~810)±50mm | | |



KL-CB•I MEDICAL CARE BED

KL- CB•lobstetric beds are designed for various stages of care for patients .They can be used in labor, delivery and postpartum recovery period .The chair posture can be easily converted to provide adequate comfort for the lying-in women .The lying-in women don't need to be moved from one bed to another thanks to the beds' perfect structure.

Features ◆

- ◆ Imported LINAK motor. Various actions are controlled by the panel on both guardrails.
- ◆ The design of the inner control panel of the guardrail allows the mother to control various movements.
- ◆ The mattress is wrapped with imported artificial leather. High-density memory sponge is formed in one piece, with no seam.
- ◆ super low level design
- ◆ The foot board can be electrically lifted and lowered, and can be folded up and external folded.
- ◆ The foot board and leg support can be quickly and freely switched to meet different scene requirements.



◆ KL - CB.I

Accessories ◆

A pair of leg Support(Already installed), a sewage basin, a power cord, a IV pole



KL-CB•II MEDICAL CARE BED

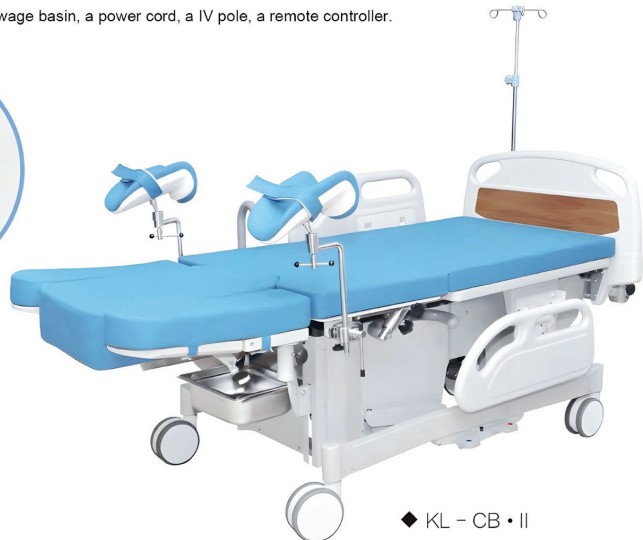
KL- CB•II obstetric beds are designed for various stages of care for patients .They can be used in labor, delivery and postpartum recovery period .The chair posture can be easily converted to provide adequate comfort for the lying-in women .The lying-in women don't need to be moved from one bed to another thanks to the beds' perfect structure.

Features

- ◆ Imported LINAK motor. Various actions are controlled by the remote controller.
- ◆ Super mute big foot wheel which is easily moved and equipped with center control breaking system.
- ◆ Equipped with stainless steel sewage basin
- ◆ super low level design
- ◆ Leg support can be rotated 180°. It also can b used for foot pedal.

Accessories

A pair of leg Support, a sewage basin, a power cord, a IV pole, a remote controller.



◆ KL - CB • II

Specifications

| Mode | KL-CB.II | Mode | KL-CB.II |
|---------------------------|----------------|----------------------|------------------|
| Length | 1950±50mm | Foot board upwards | ≥40° |
| Width | 800±50mm | Foot board downwards | ≥90° |
| Height Adjustment | (550~800)±50mm | Main Voltage AC | 220V±22V, 50±1Hz |
| Trendelenburg / Rev-Trend | ≥5° / ≥12° | Input power VA | 150±10% |
| Back board upwards | ≥60° | | |

KL-2D ELECTRIC OBSTETRIC TABLE

KL-2D integrated obstetric bed is suitable for conducting parturient delivery, gynecological surgery, operative abortion, diagnosis and examinations etc.by medical unit.

Features

- ◆ Imported LINAK motor. Various actions are controlled by foot controller.
- ◆ The base seat and upright column covering are made of high quality 304 stainless steel which is anti-corrosive and can be easily clean.
- ◆ External folding auxiliary table is for easy dismantling.
- ◆ Equipped with stainless steel sewage basin and other accessories.
- ◆ Foot treadle brake device which is easy for moving obstetric table.

Specifications

| Mode | KL-2D |
|--------------------------------|------------------|
| Length | 2000±50mm |
| Width | 600±10mm |
| Height Adjustment | (650~900)±50mm |
| Trendelenburg / Rev-Trend | ≥10° / ≥12° |
| Back board upwards | ≥50° |
| Leg board outwards | ≥90° |
| Working area Length / Width mm | 600*600 |
| Main Voltage AC | 220V±22V, 50±1Hz |
| Input power VA | 150±10% |



◆ KL - 2D

Accessories

A pair of arm support, a pair of leg Support, a pair of foot pedal, a pair of arm rods, a stainless steel sewage basin, a foot controller

KL-2E ELECTRIC OBSTETRIC TABLE

KL-2E integrated obstetric bed is suitable for conducting parturient delivery, gynecological surgery, operative abortion, diagnosis and examinations etc.by medical unit.

Features

- ◆ Imported LINAK motor. Various actions are controlled by remote controller.
- ◆ The base seat and upright column covering are made of high quality 304 stainless steel which is anti-corrosive and can be easily clean.
- ◆ The mattress is wrapped with imported artificial leather. High-density memory sponge is formed in one piece, with no seam.
- ◆ Concealed stainless steel auxiliary table
- ◆ Foot treadle brake device which is easy for moving obstetric table.
- ◆ Equipped with stainless steel sewage basin and other accessories.

Specifications

| Mode | KL-2E |
|--------------------------------|------------------|
| Length | 2000±50mm |
| Width | 600±20mm |
| Height Adjustment | (700~950)±50mm |
| Trendelenburg / Rev-Trend | ≥10° / ≥12° |
| Back board upwards | ≥50° |
| Working area Length / Width mm | 520*500 |
| Main Voltage AC | 220V±22V, 50±1Hz |
| Input power VA | 150±10% |



◆ KL - 2E

Accessories

A pair of arm support, a pair of leg Support, a pair of foot pedal, a pair of arm rods, a stainless steel sewage basin, a hand held remote controller

KL-2F ELECTRIC OBSTETRIC TABLE

KL-2F integrated obstetric bed is suitable for prenatal examination, delivery surgery etc.

Features

- ◆ Electric hydraulic system is from HOERBIGER(Germany)
- ◆ Various actions are controlled by hand held remote controller and foot controller.
- ◆ Equipped with arm support can be use for guardrail.
- ◆ The mattress is wrapped with imported artificial leather. High-density memory sponge is formed in one piece, with no seam.
- ◆ The base is made of high-strength ABS, which is corrosion-resistant and easy to clean.
- ◆ Equipped with stainless steel sewage basin and other accessories.
- ◆ Ultra-quiet casters with brakes which is easy for moving obstetric table.
- ◆ Extra-wide and stylish design, elegant appearance
- ◆ Foot plate can be outside and dismantled.
- ◆ Equipped with leg support and foot pedal plate

Specifications

| Mode | KL-2F |
|----------------------|------------------|
| Length | 1950±50mm |
| Width | 700±20mm |
| Height Adjustment | (680~930)±50mm |
| Back board upwards | ≥60° |
| Back board downwards | ≥5° |
| Seat board upwards | ≥25° |
| Leg board outwards | ≥90° |
| Main Voltage AC | 220V±22V, 50±1Hz |
| Input power VA | 150±10% |



◆ KL - 2F



Accessories

A pair of arm support, a pair of leg Support, a pair of foot pedal, a pair of arm rods, a stainless steel sewage basin, a hand held remote controller, a power cord

KL-2C MANUAL OBSTETRIC TABLE

KL-2C type integrated obstetric bed is suitable for conducting parturient delivery, gynecological surgery, operative abortion, diagnosis and examinations etc.by medical unit.

Features

- ◆ The base seat and upright column covering are made of high quality 304 stainless steel which is anti-corrosive and can be easily clean.
- ◆ The main bed and auxiliary bed are connected with each other, auxiliary table is easy for dismantling.
- ◆ Foot pedal is hydraulic elevated. Imported Y type sealing ring and is durable.
- ◆ Equipped with stainless steel sewage basin and other accessories.
- ◆ The mattress is wrapped with imported artificial leather. High-density memory sponge is formed in one piece, with no seam.
- ◆ Equipped with brake device which is easy for moving the table.
- ◆ Leg plate can be rotated 180°. It also can be used for foot pedal.



Accessories

A pair of arm support, a pair of leg support, a pair of arm rods, a stainless steel sewage basin



◆ KL - 2C

Specifications

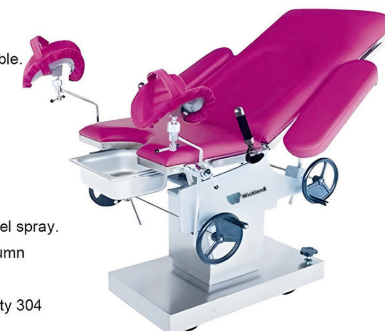
| Mode | KL-2C | Mode | KL-2C |
|---------------------------|----------------|--------------------------------|---------|
| Length | 1950±50mm | Back board upwards | ≥50° |
| Width | 600±10mm | Back board downwards | ≥3° |
| Height Adjustment | (700~900)±50mm | Leg board outwards | ≥90° |
| Trendelenburg / Rev-Trend | ≥10° / ≥20° | Working area Length / Width mm | 600*600 |

KL-2 series MANUAL OBSTETRIC TABLE

KL-2 series type integrated obstetric bed is suitable for conducting parturient delivery, gynecological surgery, operative abortion, diagnosis and examinations etc.by medical unit.

Features

- ◆ The main bed and auxiliary bed are connected with each other, auxiliary table is easy for dismantling. The auxiliary table with four wheels.
- ◆ Foot pedal is hydraulic elevated. Imported Y type sealing ring and is durable.
- ◆ The mattress is wrapped with imported artificial leather. High-density memory sponge is formed in one piece, with no seam.
- ◆ Equipped with brake device which is easy for moving the table.

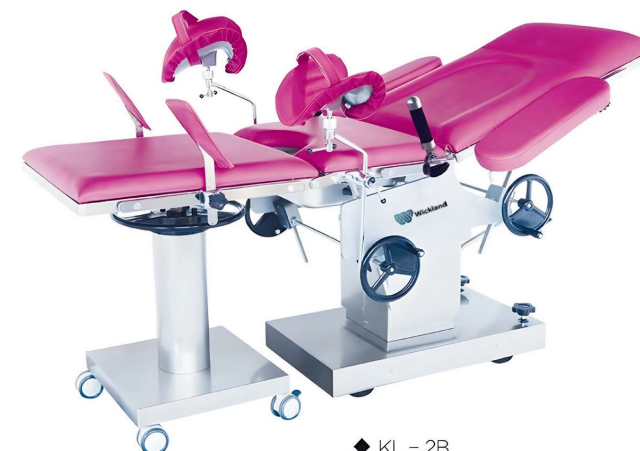


Notes

- ◆ KL-2 The base seat and upright column covering are made of carbon steel spray.
- ◆ KL-2A The tabletop is carbon steel spray. The base seat and upright column covering are made of 304 stainless steel.
- ◆ KL-2B The base seat and upright column covering are made of high quality 304 stainless steel which is anti-corrosive and can be easily clean.

Accessories

A pair of arm support, a pair of leg support, a pair of arm rods, a pair of foot pedal, a stainless steel sewage basin



◆ KL - 2B

Specifications

| Mode | KL-2 KL-2A KL-2B | KL-2 KL-2A KL-2B |
|--------------------------------|------------------|------------------|
| Length | 1950±50mm | ≥50° |
| Width | 600±10mm | ≥10° |
| Height Adjustment | (750~950)±50mm | ≥30° |
| Working area Length / Width mm | 650*600 | ≥10° |

KL-3A OBSTETRIC TABLE

KL-3A KL-4A obstetric bed is suitable for typical operations such as parturient delivery, prenatal examination, operative abortion and gynecological examination.

Features

- ◆ The main bed and auxiliary bed are connected with each other, auxiliary table is easy for dismantling. The auxiliary table with four wheels.
- ◆ The main bed adjusts various movements for the gears, and the auxiliary bed is ratchet adjustment.
- ◆ Various accessories are complete.

Specifications

| Mode | KL-3A |
|----------------------|-----------|
| Length | 1900±50mm |
| Width | 600±20mm |
| Height Adjustment | 750±50mm |
| Back board upwards | ≥50° |
| Back board downwards | ≥15° |
| Seat board upwards | ≥30° |
| Seat board downwards | ≥8° |
| Leg board upwards | ≥30° |
| Leg board downwards | ≥30° |



◆ KL - 3A

KL-4A GYNECOLOGICAL EXAMINATION BEDS

Specifications

| Mode | KL-4A |
|----------------------|-----------|
| Length | 1400±30mm |
| Width | 500±10mm |
| Height Adjustment | 750±50mm |
| Back board upwards | ≥50° |
| Back board downwards | ≥15° |

Notes

KL-3A, KL-4A 304 stainless steel

Accessories

KL-3A: A pair of arm support, a pair of leg support, a pair of arm rods, a pair of foot pedal

KL-4A: a pair of leg support, a pair of arm rods



◆ KL - 4A

KL-FS·II ELECTRIC GYNECOLOGICAL TABLE

KL-FS.II electric gynecological table is suitable for prenatal examination, delivery surgery etc.

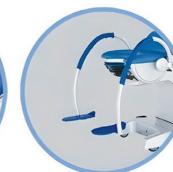
Specifications

| Mode | KL-FS.II |
|---------------------------|--------------------|
| Length | 1270±50mm |
| Width | 550±30mm |
| Height Adjustment | (700-1000)±50mm |
| Trendelenburg / Rev-Trend | ≥5° / ≥12° |
| Back board downwards | ≥40° |
| Leg board reflex | ≥30° |
| Working area | (350*480)±20mm |
| Main Voltage AC | 220V±22V, 50Hz±1Hz |



Features

- ◆ Various actions are controlled by imported LINAK motor.
- ◆ Hand held remote control and pedal remote control, independent of each other, easy to operate
- ◆ With concealed stainless steel sewage waste basin
- ◆ The mattress is wrapped with imported artificial leather. High-density memory sponge is formed in one piece, with no seam.
- ◆ Equipped with brake device which is easy for moving the table.
- ◆ The base is made of high-strength ABS, which is corrosion-resistant and easy to clean.
- ◆ Leg plate can be lifted electrically.
- ◆ Concealed stainless steel auxiliary table
- ◆ With the function of auto-restoration



◆ KL - FS · II

Accessories

A pair of arc-shaped handle, a pair of leg support, a stainless steel sewage basin, a power cord, a hand held remote controller, a foot controller

KL-FS•I ELECTRIC GYNECOLOGICAL TABLE

KL-FS.I electric gynecological table is suitable for prenatal examination, delivery surgery etc.

Features

- ◆ Imported LINAK motor. Various actions are controlled by foot controller.
- ◆ The base is made of high-strength ABS.
- ◆ The mattress is wrapped with imported artificial leather. High-density memory sponge is formed in one piece, with no seam.
- ◆ Plug-in auxiliary table for easy disassembly
- ◆ Equipped with foot brake device which is easy for moving the table.

Specifications

| Mode | KL-FS.II |
|---------------------------|--------------------|
| Length | 1270±50mm |
| Width | 550±30mm |
| Height Adjustment | (700-1000)±50mm |
| Trendelenburg / Rev-Trend | ≥5° / ≥12° |
| Back board downwards | ≥40° |
| Leg board reflex | ≥30° |
| Working area | (350*480)±20mm |
| Main Voltage AC | 220V±22V, 50Hz±1Hz |



◆ KL - FS • I

Accessories

A pair of arm rods, a pair of leg support, a stainless steel sewage basin, auxiliary table(already installed), a foot controller

KL-FS•III GYNECOLOGICAL TABLE

KL- FS•III gynecological table is suitable for prenatal examination, delivery surgery etc.

Features

- ◆ Adopt high density memory sponge and is once formed, with no seam.
- ◆ Hydraulic lifting by foot pedal, other actions are controlled by pneumatic.
- ◆ Imported Y shaped sealing ring and durable
- ◆ Stainless steel concealed auxiliary table
- ◆ The base is made of high-strength ABS.
- ◆ Equipped with foot brake device which is easy for moving the table.

Specifications

| Mode | KL-FS.III |
|---------------------------------|----------------|
| Length | 1300±50mm |
| Width | 550±30mm |
| Height Adjustment | (700-950)±50mm |
| Dimension of Auxiliary Platform | (350×450)±20mm |
| Trendelenburg / Rev-Trend | ≥3° / ≥10° |
| Back board downwards | ≥70° |



◆ KL - FS • III

Accessories

A pair of arm rods, a pair of leg support, a stainless steel sewage basin

KL-FS•V ELECTRIC GYNECOLOGICAL TABLE

KL-FS.V electric gynecological table is suitable for prenatal examination, delivery surgery etc.

Features

- ◆ Whole stainless steel hidden auxiliary table with flexible extension and retraction.
- ◆ Equipped with hidden sewage basin.
- ◆ With foot control, can adjust the movements easily.
- ◆ Imported LINAK gear-motor, without noise, have a long service life.

Specifications

| Mode | KL-FS.V |
|---------------------------|----------------|
| Length | 1450±50mm |
| Width | 520±30mm |
| Height Adjustment | (400-900)±50mm |
| Trendelenburg / Rev-Trend | ≥15° / ≥25° |
| Power Supply | 220V, 50Hz |



◆ KL - FS • V

Accessories

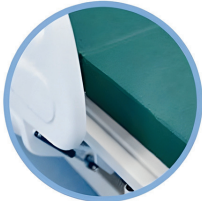
A pair of arm rods, a pair of leg support, a stainless steel sewage basin

KL-DBseries ELECTRIC MEDICAL CARE BED

KL- DB series electric medical care bed is suitable for medical unit, ICU and high-end ward.

Features

- ◆ Imported brand motor. Various actions are controlled by controller.
- ◆ Bed, base and guardrail once formed by ABS engineering plastic.
- ◆ Super mute big foot wheel which is easily moved and equipped with brake device.



◆ KL - DB • I



◆ KL - DB • II

Notes

- ◆ KL-DB.I three function
- ◆ KL-DB.II five function

KL-DB•I ELECTRIC MEDICAL CARE BED

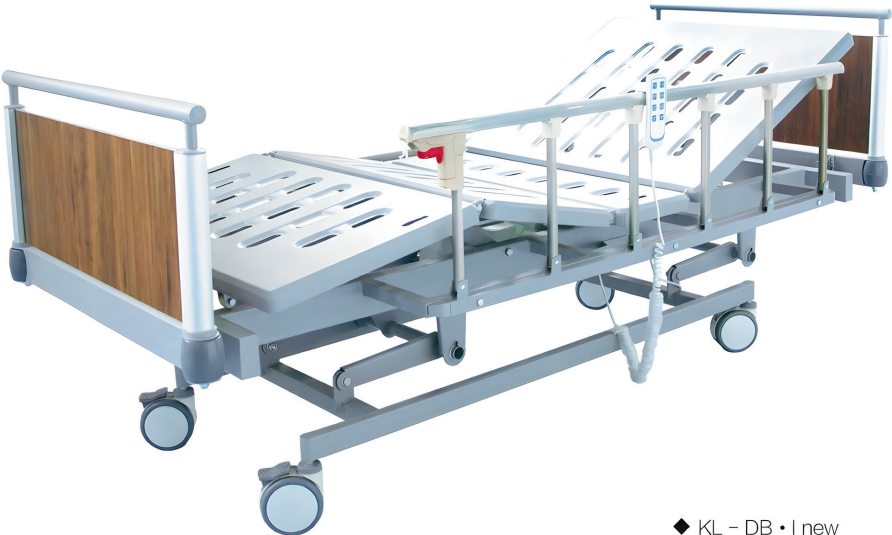
KL-DB.I electric medical care bed is suitable for medical unit, ICU and high-end ward.

Features

- ◆ Imported brand motor. Various actions are controlled by controller.
- ◆ The bed and the side rails are made of aluminum alloy, which is easy to clean.
- ◆ Super mute big foot wheel which is easily moved and equipped with brake device.

Specifications

| Mode | |
|--------------------|----------------|
| Length | 1950±50mm |
| Width | 900±50mm |
| Height Adjustment | (500-750)±50mm |
| Back board upwards | ≥50° |
| Leg board upwards | ≥40° |



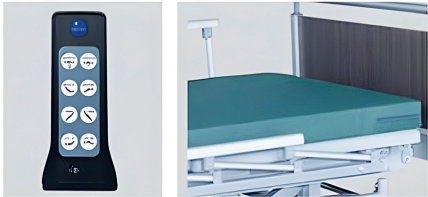
◆ KL - DB • I new

KL-DB•II ELECTRIC MEDICAL CARE BED

KL-DB.II electric medical care bed is suitable for medical unit, ICU and high-end ward.

Features

- ◆ Imported brand motor. Various actions are controlled by controller.
- ◆ Super low level design, five function
- ◆ The bed and the side rails are made of aluminum alloy, which is easy to clean.



◆ KL - DB • II new



KL-B series MANUAL HOSPITAL BED

KL- B series is suitable for recuperating and nursing.

Features

- ◆ Lift, back board upwards and leg plate upwards are all controlled by crank.
- ◆ The bed and the side rails are made of aluminum alloy, which is easy to clean.



◆ KL - B • I



◆ KL - B • II



◆ KL - B • III

Specifications

| Mode | KL- B.II |
|--------------------|----------------|
| Length | 1950±50mm |
| Width | 900±50mm |
| Height Adjustment | (420-700)±50mm |
| Back board upwards | ≥70° |
| Leg board upwards | ≥40° |

KL-ZC•IA ELECTRIC EXAMINATION TABLE

KL-ZC series electric examination table are used for exam and diagnosis.

Features

- ◆ Electric replacement disposable sheets
- ◆ Antibacterial waterproof mattress
- ◆ With stainless steel infusion stand (optional)



◆ KL - ZC • IA

KL-ZC•IIA ELECTRIC EXAMINATION TABLE

KL-ZC series electric examination table are used for exam and diagnosis.

Features

- ◆ Antibacterial waterproof mattress
- ◆ Smart Roll function, to avoid cross contamination between patients
- ◆ Ultra-quiet medical casters, 360 degree rotation, flexible and with brake function
- ◆ The frame is 304 stainless steel
- ◆ Imported brand motor with no noise and durable
- ◆ All the actions are controlled by hand held remote controller.
- ◆ With stainless steel infusion stand (optional)



◆ KL - ZC • IIA

Specifications

| Mode | KL- ZC.IA | KL- ZC.IIA |
|--------------------|-----------|----------------|
| Table Size | 1950±50mm | 1900*700*650mm |
| Back board upwards | | ≥40° |
| Height Adjustment | | (300-650)±50mm |

KL-T•IB MEDICAL HANGING TOWER

KL-T.IB electric medical pendant is a new and practical equipment, which is used in modern clean operation rooms and general operation rooms.



Features

- ◆ The control cabinet of tower crane adopts imported high-strength aluminium alloy of patent technology for the one-off extrusion molding, and the surface undergoes the primary oxidation treatment.
- ◆ Aluminum molding tray with non-slip texture
- ◆ Mechanical friction damping brake
- ◆ Imported motor, cantilever with lift up and down electrically and rotation function, precise positioning without drift
- ◆ Gas pipeline, power supply and computer communication line are arranged without interference.
- ◆ The tower adopts German standard gas terminal (over 20,000 of inserting and pulling out)



◆ KL - T • IB

Basic configuration

four power outlets, one internet outlet, one compressed air, one nitrous oxide, one suction gas, one anesthesia gas (German style terminal)(optional gases)

KL-T•IBJ MEDICAL HANGING TOWER

Compared with KL-T.IB, it adds suspension endoscopic workstation. It's an ideal equipment for purifying operating rooms and general operating rooms.



◆ KL - T • IBJ

Basic configuration ◆

eight power outlets, one telephone outlet, one internet outlet, one compressed air, one oxygen, one carbon dioxide, one suction gas, one anesthesia gas(German style terminal)(optional gases)

KL-T•IIB MEDICAL HANGING TOWER

KL-T.IIB manual medical pendant is a necessary equipment for modern clean operation room, general operation room and ICU room. All kinds of medical gases, electrical & instrument, network are all gathered on the control board. Some medical machines of certain weight can be placed on the board and drawer.



◆ KL - T • IIB/T • IIB

◆ KL - T • IIB

Features ◆

- ◆ The control cabinet of tower crane adopts imported high-strength aluminium alloy of patent technology for the one-off extrusion molding, and the surface undergoes the primary oxidation treatment.
- ◆ Aluminum molding tray with non-slip texture
- ◆ Mechanical friction damping brake
- ◆ Gas pipeline, power supply and computer communication line are arranged without interference.
- ◆ The tower adopts German standard gas terminal(over 20,000 of inserting and pulling out)
- ◆ With the function of rotation horizontally, precise positioning without drift

Basic configuration ◆

four power outlets, one internet outlet, one oxygen, one compressed air, one suction gas(German style terminal)(optional gases)

KL-T·IIBM MEDICAL HANGING TOWER



◆ KL - T · IIBM

Features ◆

- ◆ The control cabinet of tower crane adopts imported high-strength aluminium alloy of patent technology for the one-off extrusion molding, and the surface undergoes the primary oxidation treatment.
- ◆ Aluminum molding tray with non-slip texture
- ◆ Mechanical friction damping brake
- ◆ Gas pipeline, power supply and computer communication line are arranged without interference.
- ◆ The tower adopts German standard gas terminal(over 20,000 of inserting and pulling out)
- ◆ With the function of rotation horizontally, precise positioning without drift

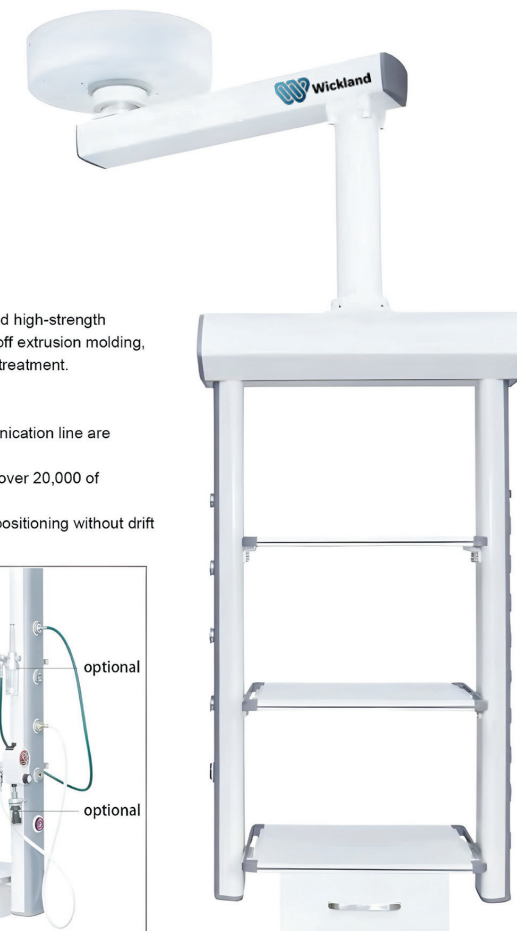


Basic configuration ◆

four power outlets, one internet outlet, compressed air, oxygen, suction gas, nitrous oxide, anesthesia gas (German style terminal)(optional gases)

KL-T·IIBJ MEDICAL HANGING TOWER

KL-T.IIBJ manual medical pendant is a necessary equipment for m general operation room and ICU room. Some medical machines of on the platform.



◆ KL - T · IIBJ

Features ◆

- ◆ The control cabinet of tower crane adopts imported high-strength aluminium alloy of patent technology for the one-off extrusion molding, and the surface undergoes the primary oxidation treatment.
- ◆ Aluminum molding tray with non-slip texture
- ◆ Mechanical friction damping brake
- ◆ Gas pipeline, power supply and computer communication line are arranged without interference.
- ◆ The tower adopts German standard gas terminal(over 20,000 of inserting and pulling out)
- ◆ With the function of rotation horizontally, precise positioning without drift



Basic configuration ◆

eight power outlets, one telephone outlet, one internet outlet, one compressed air, one oxygen, one carbon dioxide, one suction gas,

KL-T•IIBQ MEDICAL HANGING TOWER

KL-T.IIBQ medical bridge suspension unit is specially designed for ICU rooms, observing rooms and recovering room. All kinds of medical gases, electrical & instrument, network are all gathered on the control board. Light is equipped in the middle of the bridge. As your desire, it can be equipped with communication machine, monitor, video phone, background music, teaching and distance consultation system.



◆ KL - T · IIBQ

Features ◆

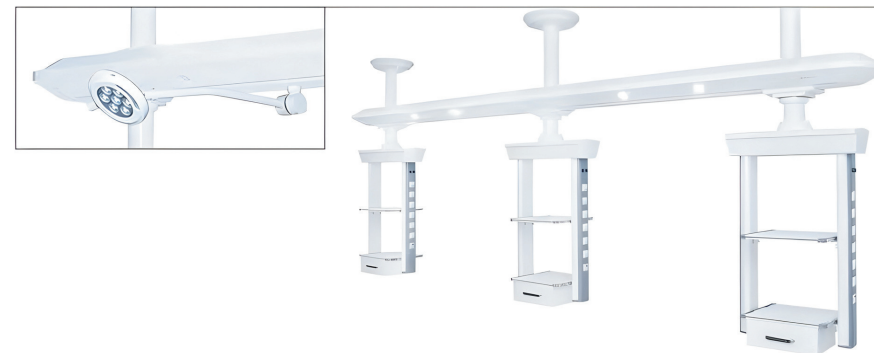
- ◆ The cross beam and control cabinet of tower crane adopts imported high-strength aluminium alloy of patent technology for the one-off extrusion molding, and the surface undergoes the primary oxidation treatment.
- ◆ Aluminum molding tray with non-slip texture
- ◆ Mechanical friction damping brake
- ◆ Gas pipeline, power supply and computer communication line are arranged without interference.
- ◆ The tower adopts German standard gas terminal(over 20,000 of inserting and pulling out)
- ◆ Dry and wet areas are adopted the independent design. It is equipped with gas cabinet body.
- ◆ Transverse translation in dry and wet areas to meet various care requirements
- ◆ Light is equipped in the middle of the bridge.

Basic configuration ◆

ten power outlets, one telephone outlet, two internet outlets, one compressed air, two oxygen, one suction gas (optional gases)

KL-T•IIBQ MEDICAL HANGING TOWER

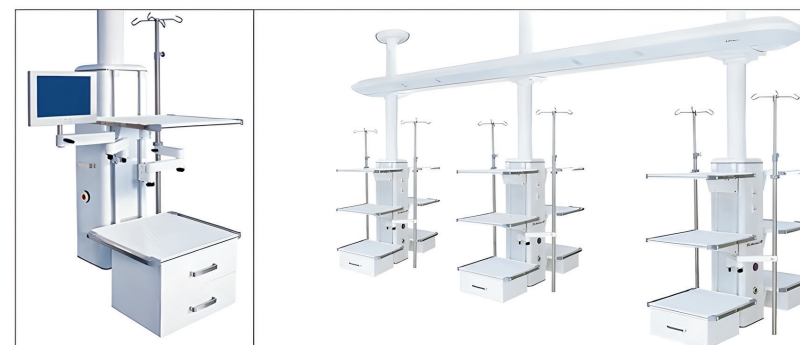
OPTIONAL



OPTIONAL



OPTIONAL

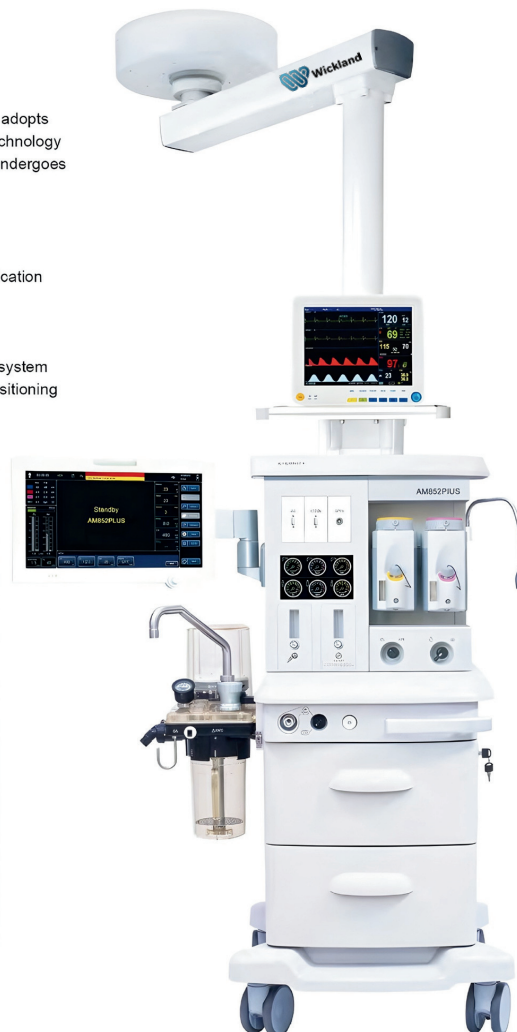


KL-T·IIIAM MEDICAL HANGING TOWER

KL-T.IIIAM electric manual medical pendant is a anesthetic station. It is designed for modern clean operation rooms and general operation rooms. All kinds of medical gases, electrical & instrument, network are all gathered on the control board. All aspects of the mobile function make surgery easier and faster.

Features

- ◆ The cross beam and control cabinet of tower crane adopts imported high-strength aluminium alloy of patent technology for the one-off extrusion molding, and the surface undergoes the primary oxidation treatment.
- ◆ Aluminum molding tray with non-slip texture
- ◆ Mechanical friction damping brake
- ◆ Imported motor, vertical lifting electrically
- ◆ Gas pipeline, power supply and computer communication line are arranged without interference.
- ◆ The tower adopts German standard gas terminal (over 20,000 of inserting and pulling out)
- ◆ High capacity with suspension anesthetic machine system
- ◆ With the function of rotation horizontally, precise positioning without drift



◆ KL - T · IIIAM

Basic configuration

four power outlets, one internet outlets, one compressed air, two oxygen, one suction gas, one nitrous oxygen, one anesthetic gas (optional gases)

KL-T·IVB MEDICAL HANGING TOWER

KL-T.IVB ICU pendant is an economic equipment for ICU room and



Features

- ◆ The control cabinet of tower crane adopts imported high-strength aluminium alloy of patent technology for the one-off extrusion molding, and the surface undergoes the primary oxidation treatment.
- ◆ Aluminum molding tray with non-slip texture
- ◆ Mechanical friction damping brake
- ◆ Gas pipeline, power supply and computer communication line are arranged without interference.
- ◆ The tower adopts German standard gas terminal (over 20,000 of inserting and pulling out)



Basic configuration

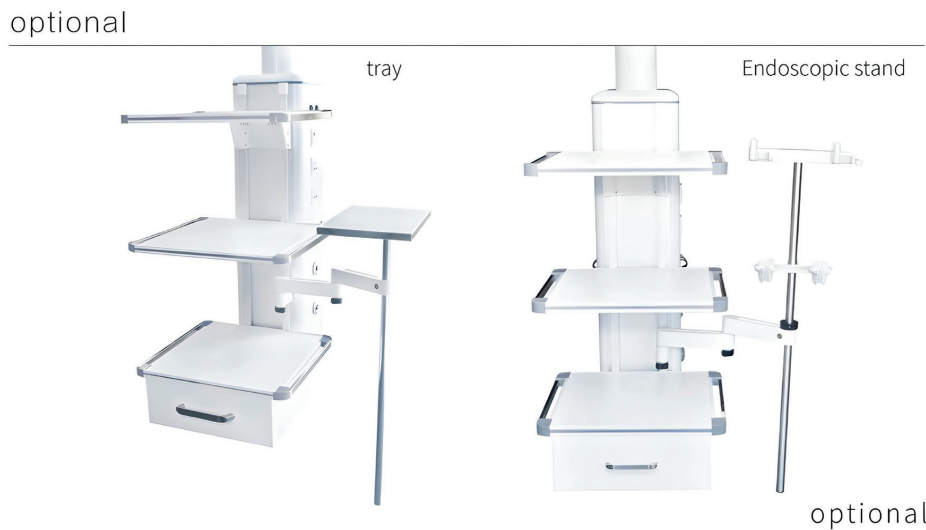
four power outlets, o



◆ KL - T · IVB

l air(German style terminal) (optional gases)

MEDICAL HANGING TOWER



DFX-23D.I 23C.I 23C.II (ELECTRIC SUCTION MACHINE)

DFX- 23D•I、DFX- 23C•I、DFX- 23C•II with new new shape, and have movable medical suction device. They are used for operations and wards for taking out puts, blood, sputum and other thick liquid from human body.

Features

- 23D.I, 23C.II: all plastic enclosure which is formed in one piece, 23C.II adopts high quality cold plate shell.
- Imported membrane pump with longer life
- Low noise and maintenance-free
- With overflow protection unit to prevent liquid from getting into pump body
- Be equipped with hand switch and foot switch

Specifications

| Model | DFX- 23D•I、DFX- 23C•I、DFX- 23C•II |
|---------------------------------------|-----------------------------------|
| Power supply | 220V±10% 50Hz±2% |
| Air pumping efficiency | ≥40L/min |
| Adjustment range of negative pressure | 0.013~0.09MPa |
| Noise level | ≤65dB |
| Input power | 400VA |
| Liquid vessel | 2500ml×2(glass bottle) |



DFX-23D · I



DFX-23C · I



DFX-23C · II

DFX-23C.II NEW (ELECTRIC SUCTION MACHINE)

DFX-23C.II (NEW) with new shape, and have movable medical suction device. They are used for operations and wards for taking out puts, blood, sputum and other thick liquid from human body.

Features

- Imported diaphragm pump
- The appearance and the internal structure are completely upgraded, and the modeling is graceful and the structure is reasonable
- All ABS plastic shell
- Bottle is easy for cleaning & disinfection
- Oil-free pump is maintenance-free
- Low noise
- With an overflow protection
- Working type:intermittent loading,continuous operation

Specifications

| | |
|----------------------------|---------------------------|
| Model | DFX- 23C · II (NEW) |
| Power supply | 220V±10% 50Hz±2% |
| Suction rate | ≥40L/min |
| Range of negative pressure | 0.013~0.09MPa |
| Noise level | ≤60dB |
| Input power | 400VA |
| Suction bottle | 2000ml×2 (plastic bottle) |
| Pump structure | Diaphragm type |



DFX- 23C · II

DFX-23C.III 23C.V (ELECTRIC SUCTION MACHINE)

DFX-23C.III, DFX-23C.V with new shape, and have movable medical suction device. They are used for operations and wards for taking out puts, blood, sputum and other thick liquid from human body.

Features

- 23C.V: all plastic enclosure which is formed in one piece, 23C.III adopts high quality cold plate shell.
- Imported membrane pump with longer life
- Low noise and maintenance-free
- With overflow protection unit to prevent liquid from getting into pump body
- Be equipped with hand switch and foot switch



Specifications

| | | |
|---------------------------------------|-----------------------------------|--------------|
| Model | DFX- 23C · III | DFX- 23C · V |
| Power supply | 220V±10% 50Hz±2% | |
| Air pumping efficiency | ≥40L/min 23C.III 80L/min optional | |
| Adjustment range of negative pressure | 0.013~0.09MPa | |
| Noise level | ≤65dB | |
| Input power | 400VA | |
| Liquid vessel | 2500ml×2 | |



DFX- 23C · III



DFX- 23C · V

DFX-23B.II (ELECTRIC PORTABLE SUCTION MACHINE)

DFX-23B.II with low noise. They are used for operations and family for taking out puts, blood, sputum and other thick liquid from human body.

Features

- AC and DC power supplies can be connected to car-carried power supply
- Self-storage supply, up to 2 hours
- AC and DC automatic switching, does not affect normal use
- Imported membrane pump with longer life
- With full charge function, when the device is full charged, the charging will be automatically stopped.
- Small size, especially for ambulance and field application
- With overflow protection unit to prevent liquid from getting into pump body
- Adopts high quality cold plate shell
- Surface electrostatic spraying
- Portable

Specifications

| | |
|---------------------------------------|--------------------------|
| Model | DFX- 23B·II |
| Power supply | 220V±10% 50Hz±2% |
| Air pumping efficiency | ≥28L/min |
| Adjustment range of negative pressure | 0.013~0.085MPa |
| Noise level | ≤55dB |
| Input power | 150VA |
| Liquid vessel | 1000ml×1(plastic bottle) |



DFX- 23B · II



DFX-IV.C series (ELECTRIC ABORTION SUCTION MACHINE)

DFX-IV.C electric abortion suction machine is suitable for all medical units to apply artificial abortion to pregnant women who are pregnant early, and can also be used for other surgical suction.

Features

- Imported membrane pump with longer life
- Bipolar negative pressure control, no trauma
- With a bleed valve to prevent damage to the mucous membrane
- Low noise and maintenance-free
- With overflow protection unit to prevent liquid from getting into pump body
- IV.C machine with tray on top
- Be equipped with hand switch and foot switch
- IV.C adopts high quality cold plate spray and electrostatic spray.
- IV.C new adopts all-plastic shell, beautiful and generous
- Double vacuum negative shows negative pressure of the gas cylinder and the negative pressure bottle.

Specifications

| | |
|---------------------------------------|--|
| Model | DFX- IV·C series |
| Power supply | 220V±10% 50Hz±2% |
| Air pumping efficiency | first level≥35L/min second level≥15L/min |
| Adjustment range of negative pressure | 0.013~0.09MPa |
| Noise level | ≤65dB |
| Input power | 400VA |
| Suction liquid vessel | 500ml*2(glass bottle) |
| Gas vessel | 2500ml*2(glass bottle) |



DFX- IV · C



DFX- IV · C [new]

DFX-III (LOW NEGATIVE PRESSURE SUCTION MACHINE)

DFX-III low negative pressure suction machine is especially designed for low pressure in hospital. It is also used for suctioning of thick liquid for newborn babies.

Specifications

| | |
|---------------------------------------|--------------------------|
| Model | DFX- III |
| Power supply | 220V±10% 50Hz±2% |
| Air pumping efficiency | ≥900ml/min |
| Adjustment range of negative pressure | 0-25KPa |
| Noise level | ≤55dB |
| Input power | 18VA |
| Liquid vessel | 1000ml×1(plastic bottle) |



DFX- III

DFX-23B.I (ELECTRIC SPUTUM SUCTION MACHINE)

DFX-23B.I with low noise. They are used for operations and family for taking out puts, blood, sputum and other thick liquid from human body.

Features

- Small size, easy to carry
- Imported membrane pump with longer life
- Low noise and maintenance-free
- With overflow protection unit to prevent liquid from getting into pump body
- Be equipped with hand switch and foot switch
- Adopts high quality cold plate shell
- Inner and outer surface electrostatic spraying

Specifications

| | |
|---------------------------------------|------------------------|
| Model | DFX- 23B•I |
| Power supply | 220V±10% 50Hz±2% |
| Air pumping efficiency | ≥20L/min |
| Adjustment range of negative pressure | 0.013~0.09MPa |
| Noise level | ≤55dB |
| Input power | 400VA |
| Liquid vessel | 1000ml*2(glass bottle) |



DFX- 23B • I

DFX-23A series (ELECTRIC SPUTUM SUCTION MACHINE)

DFX-23A portable electric sputum suction machine can be used for suctioning sputum and other thick secretions in hospitals, and may also be used for first aid in the household.

Features

- All plastic ABS shell that is formed in one piece(23A.I, 23A.II)
- Macromolecule suction bottle is adopted, easy to disinfect and clean
- Oil-free pump and maintenance-free
- Small size and low noise
- With overflow protection unit to prevent liquid from getting into pump body



DFX- 23A • II



DFX- 23A • I



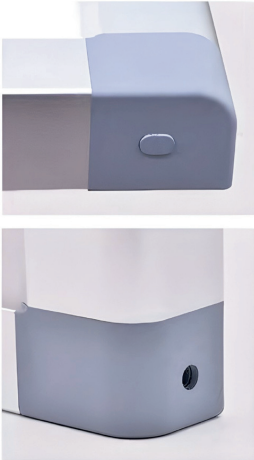
Specifications

| Model | DFX- 23A•I | DFX- 23A•II |
|---------------------------------------|------------------|------------------|
| Power supply | 220V±10% 50Hz±2% | 220V±10% 50Hz±2% |
| Air pumping efficiency | ≥18L/min | ≥15L/min |
| Adjustment range of negative pressure | 0.013~0.08MPa | 0.013~0.07MPa |
| Noise level | ≤65dB | ≤65dB |
| Input power | 150VA | 50VA |
| Liquid vessel | 1000ml | 1000ml |

X-LED Series [Intelligent]

Specifications

| | | | |
|--|--|----------|----------|
| Model | X-LED IT, X-LED IIT, X-LED IIIT | | |
| Input voltage/frequency Adapter | Input AC220-240V~50Hz | | |
| | Product input voltage: DC/24V | | |
| Rated power | IT: 30W | IIT: 60W | IIIT:90W |
| Input interface standard | DC socket | | |
| Brightness control | three-speed cycle dimming | | |
| Light source type | high-efficiency LED | | |
| Automatically extinguish without operation | 30mins | | |
| Viewing screen function | automatic induction of inserts, low brightness in standby, | | |
| | brightness memory | | |
| Dispersion coefficient of viewing screen light | >90% | | |
| Continuous working time | 24H | | |
| Average brightness of observation screen | 300~3000cd/n | | |
| Brightness uniform value coefficient | >85% | | |
| Applicable film types | ordinary analog X-ray film; high-density digital X-ray film; | | |
| | mammography breast medical film; CT film | | |
| Service environment | Environmental illumination <100lx | | |
| Installation method | wall-mounted/bracket type (optional) | | |
| Observation screen size(Length x height mm) | IT:360X440 IIT:720X440 IIIT:1080X440 | | |
| Frame size(Length x height x width mm) | IT:458X508X40 IIT:818X508X40 IIIT:1178X508X40 | | |



X-LED IIIT

X-LED IIT

X-LED IT

DZS4 ULTRAVIOLET STERILIZER

The product is used for the purpose of sterilization in medical organizations, scientific reserch institutes and pharmaceutical companies.



DZS4