

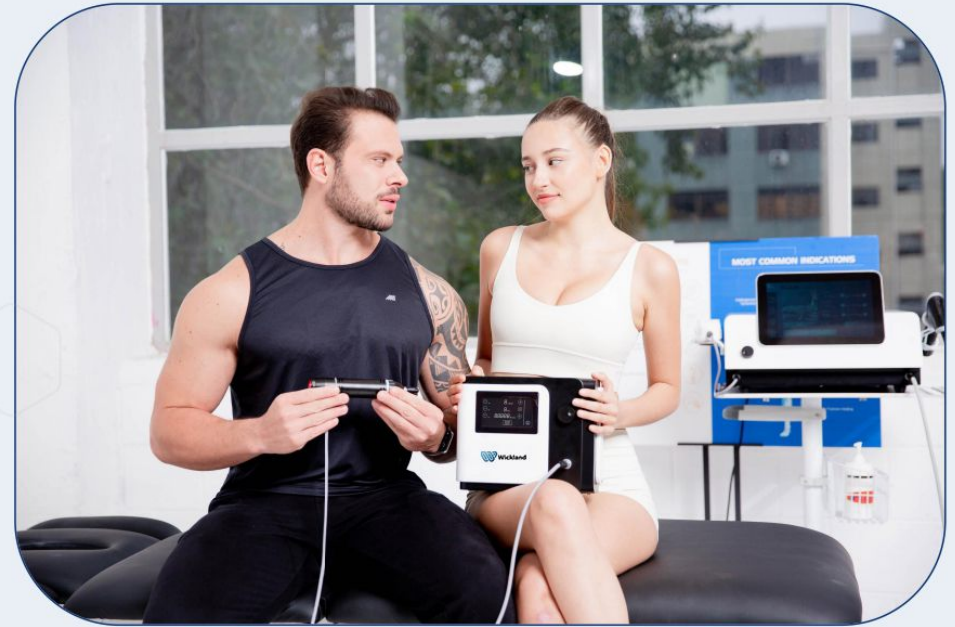
# WICKLAND

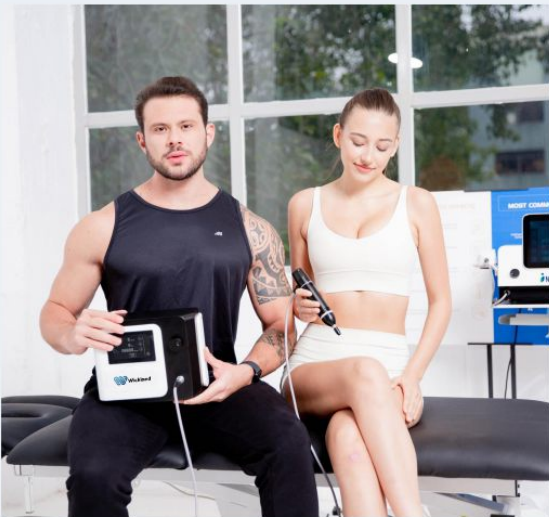
- Shockwave for ED Therapy -



- MINI SHOCKWAVE FOR HOME USE
- LOW INTENSITY FOR ED TREATMENT
- NON-INVASIVE, MEDICATION-FREE ED SOLUTION

✓ Compact size    ✓ Cost-effective    ✓ Efficient





Electromagnetic shockwave therapy is a non-invasive treatment that has been gaining popularity for the management of Erectile Dysfunction (ED). Shockwave Therapy for ED of this type can be a highly effective treatment.

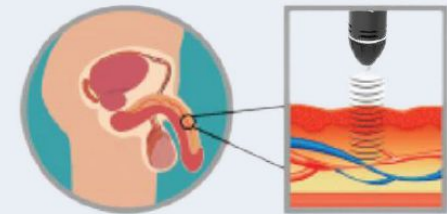




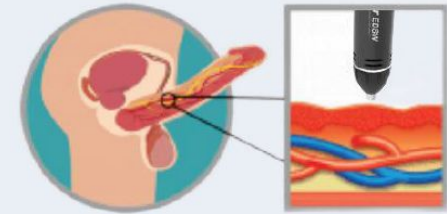
Most men suffering from erectile dysfunction have vascular problems affecting the vessels that supply blood to the cavernous bodies of the penis, resulting in a decreased ability to develop and maintain an erection.

The end result is an inadequate blood-flow followed by premature draining of an already reduced amount of blood from the cavernous bodies, meaning an erection is not achieved.

Before



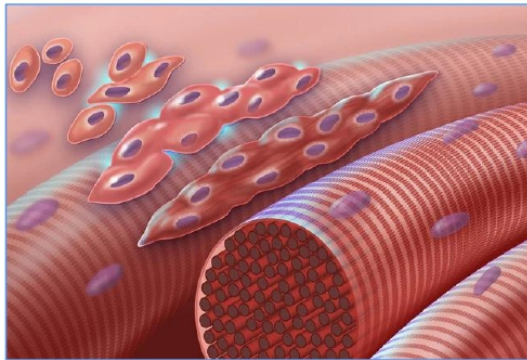
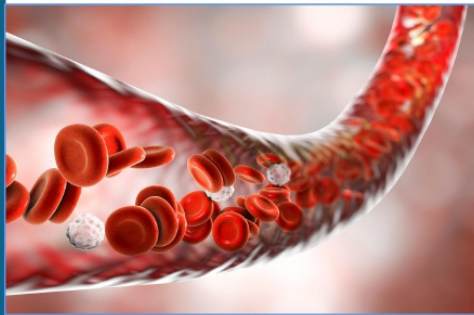
After



WICKLAND



## *Effects and Benefits of shockwave therapy for ED:*



1

### **Improved Blood Flow**

Shockwave therapy stimulates the formation of new blood vessels and improves blood flow to the penile tissue, which can help in achieving and maintaining erections.

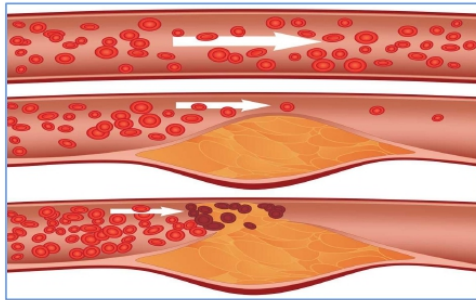
2

### **Tissue Regeneration**

The shockwaves can trigger the release of growth factors, promoting tissue regeneration and repair in the penile area.



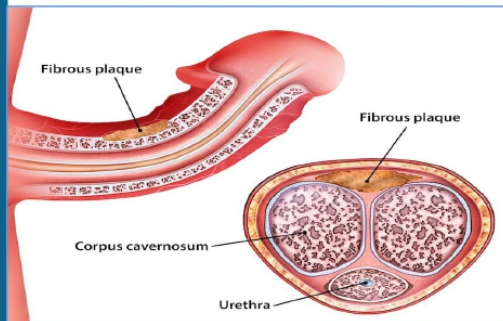
## *Effects and Benefits of shockwave therapy for ED:*



1

### **Breakdown of Plaque**

Shockwave therapy may help break down plaque buildup in blood vessels, promoting vascular health and improving erectile function.



2

### **Penile cavernosal fibrosis**

Shockwave therapy applies high-energy waves to the penile cavernosal region, eliminating fibrotic tissue, promoting new blood vessel growth.



An ergonomic, lightweight handpiece with interchangeable accessories



## 2 different accessories to chose

You can personalize your selection of accessories according toSource your own needs



Standard Head  
Offers standard intensity



Soft Head  
Provides reduced intensity





## Adjustable button

--simple control design, can easy to adjust parameters during the operation.

## Intelligent interface

-- Smart touch screen, directly adjust treatment parameters, and with treatment guidance can make the operation easier.



## *WHY CHOOSE WICKLAND ?*



**Offering safe and effective at-home treatment, say goodbye to awkward experiences.**



**Providing non-invasive, medication-free, more health ED treatment solution.**

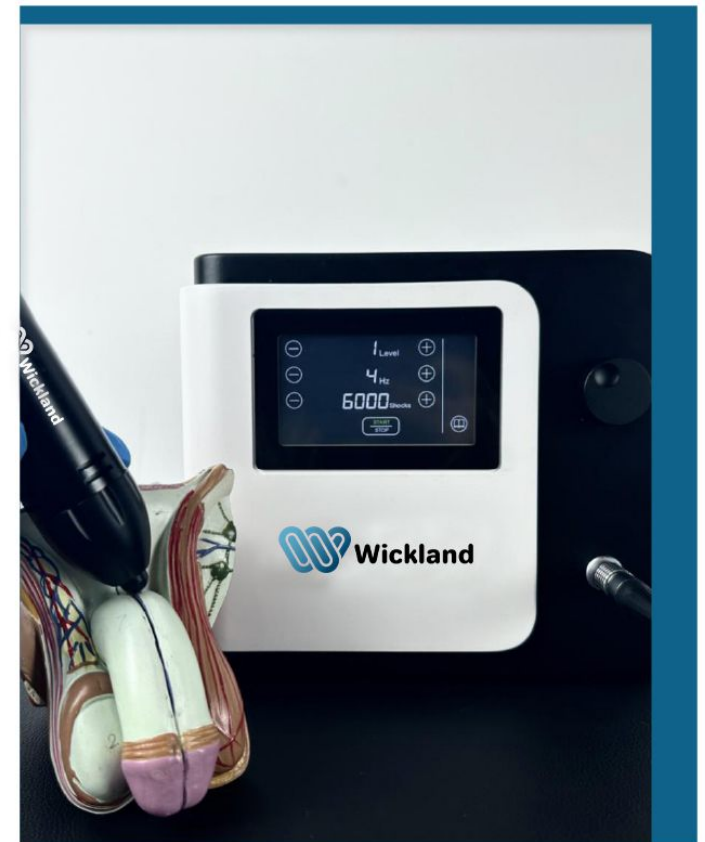


**Boasts a compact design with handpiece accessories, intelligent interface, and a variety of interchangeable and improving blood supply.**





# *Operation Display*





### *WICKLAND Technical Data*

Shockwave Type	Electromagnetic Shockwave
Energy	10-35mj
Frequency	4-16Hz
Shots	2 million shots
Touch Screen Size	4.3 inch
Net Weight	3.8KG
Machine Size	26.2*21.6*10.6 cm



# WICKLAND

- Shockwave for ED Therapy -



**PT. Wickland Medika Imantara**

**Medical, Aesthetics & Laboratory Supplier**

Jl. Palem Sememi Raya No 12 - 12A Kel. Sememi,  
Kec. Benowo Surabaya 60198 | 031-33100412